



Outdoor Lighting



Hotel Lighting



Office Lighting



Commercial Lighting

LED 4M LIGHTING CO.,LIMITED

Business Center:

2/F., Panasonic Building, Hoveyzeh St., Beheshti St.,Tehran, Iran

TEL:(98)2188504632 FAX:(98)2188753551

Factory:

No.2077, Ferdowsi 11 St., Emam Reza Road, AbbasAbad Industrial Zone, Pakdasht, Tehran, Iran

TEL:(98)2136428396 FAX:(98)2136428398

E-mail:sales@led4m.com

2017-2018



2017-2018

Focus on the value of lights



About us

Established in 1993, Moein Bargh Tehran (MBT) Co.,Ltd is a LED professional manufacture enterprise combining R&D, manufacturing, trade and service of LED lighting system.

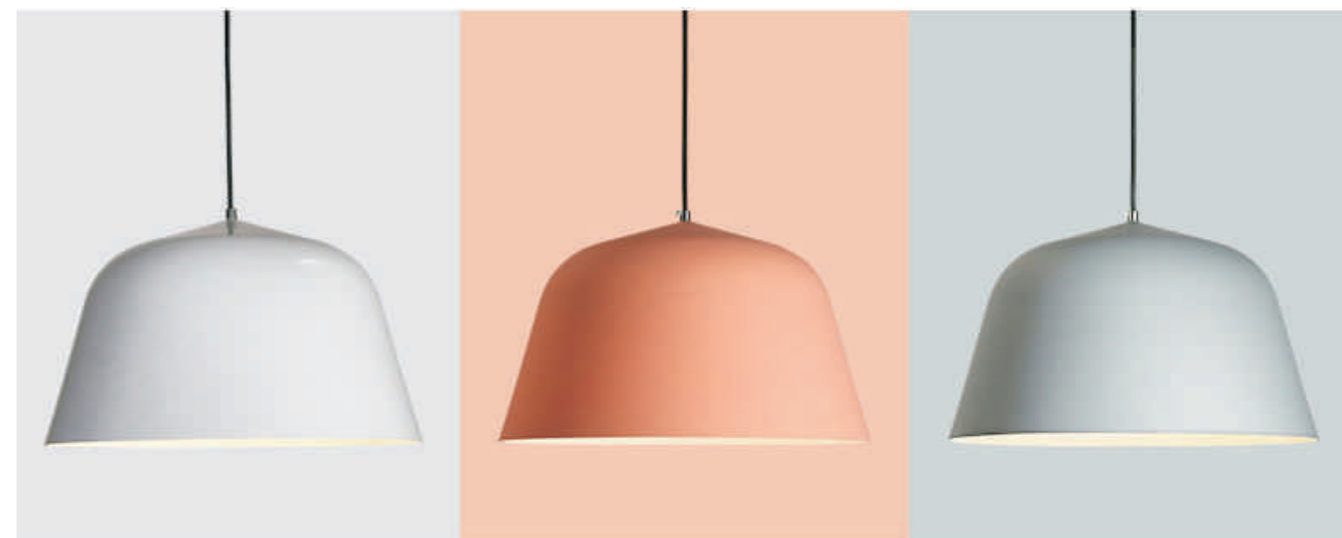
The company has strong R&D capabilities. We can provide perfect, continuable, intelligent solution for lighting control. And also provide users with one-to-one matching services. The products have obtained certifications with CE, ROHS and ERP... We

exported the production to all over the world,expecially to Europe, Canada , Asia, etc.

"Focus on the value of lights" is our operation principle. From R&D, product development, every aspect of the program is customized accurate calculation, scientific experiments, so that every beam of light can provide its value, the full interpretation of "The perfect fusion of lights with life & lights with building."



i-NORDIC & LOFT STYLE LIGHT SERIES



- Surface mounted with LED LED
- Wide Beam Angle
- Efficiency:85Lm/W
- Body of aluminium
- Luminaires are equipped with electronic driver

Order No.	Power(W)	Voltage(V)	CRI	Beam Angle(°)	SIZE(MM)
KDR-85013	E27-4	100-240	85	90	Φ400*H250



- Surface mounted with high power LED
- Wide Beam Angle
- Efficiency:85Lm/W
- Body of aluminium
- Luminaires are equipped with electronic driver

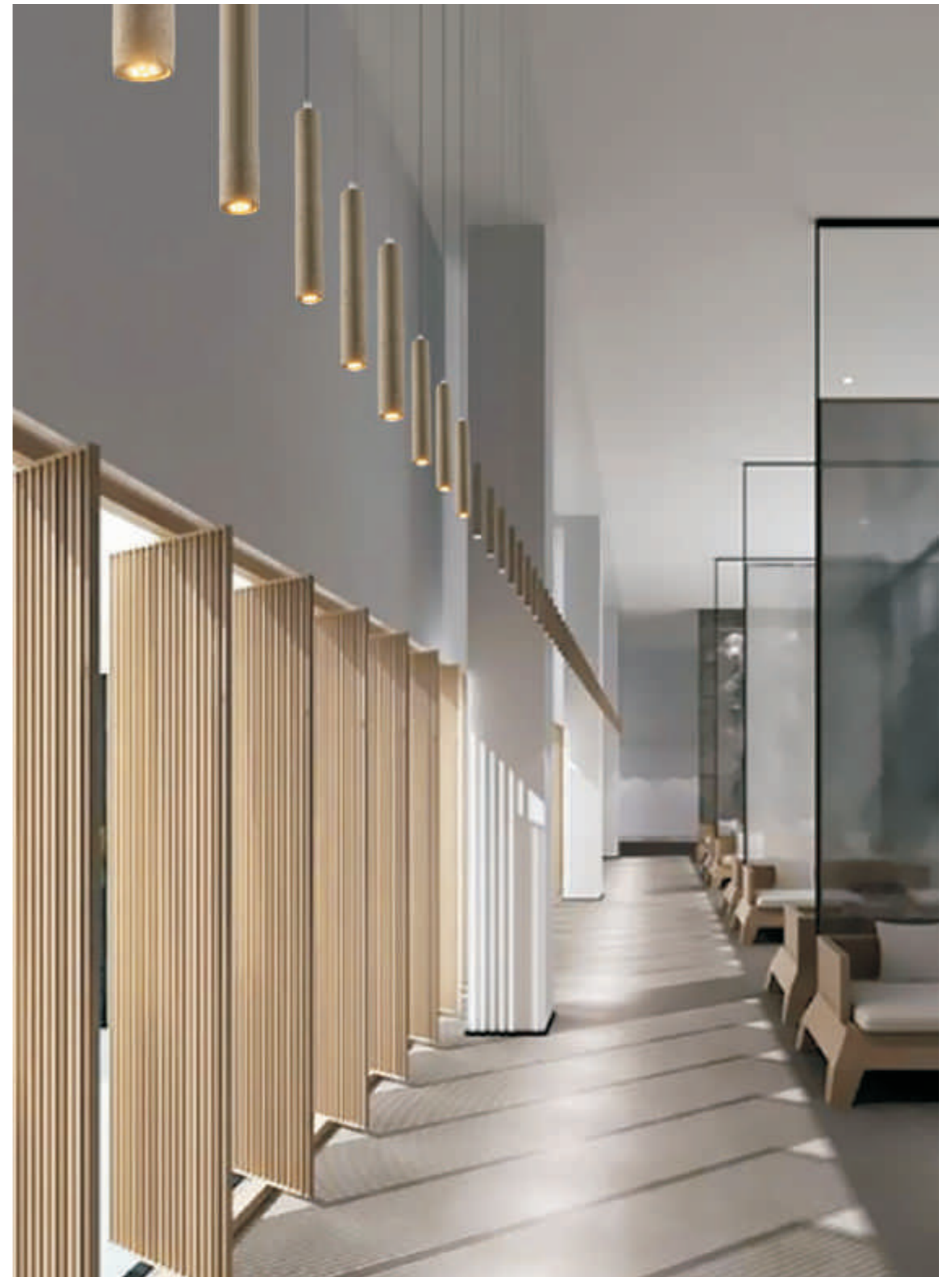
Order No.	Power(W)	Voltage(V)	CRI	Beam Angle(°)	SIZE(MM)
KDR-G300	10	100-240	85	120	Φ300*H150
KDR-G400	15	100-240	85	120	Φ400*H200
KDR-G500	20	100-240	85	120	Φ500*H250
KDR-G600	25	100-240	85	120	Φ600*H300





- Surface mounted with LED
- Wide Beam Angle
- Efficiency:85Lm/W
- Body of cement
- Luminaires are equipped with electronic driver

Order No.	Power(W)	Voltage(V)	CRI	Beam Angle(°)	SIZE(MM)
KDR-SN20	1*3	100-240	85	15/25	Φ40*H300





- Surface mounted with LED
- Wide Beam Angle
- Efficiency:85Lm/W
- Body of cement
- Luminaires are equipped with electronic driver

Order No.	Power(W)	Voltage(V)	CRI	Beam Angle(°)	SIZE(MM)
KDR-SNW100	3	100-240	85	90+90	L130*W120*H130





i-SURFACE MOUNTED SERIES

WWW.LED4M.COM



- Surface mounted with COB LED
- Wide Beam Angle
- Efficiency:85Lm/W
- Body of aluminium
- Luminaires are equipped with electronic driver

Order No.	Power(W)	Voltage(V)	CRI	Beam Angle(°)	SIZE(MM)
KDR-82108R-4	15	100-240	85	40	Φ117*H115
KDR-82108R-5	20	100-240	85	40	Φ137*H115
KDR-82108R-6	25	100-240	85	40	Φ169*H139
KDR-82108R-8	30	100-240	85	40	Φ200*H139



- Surface mounted with COB LED
- Wide Beam Angle
- Efficiency:85Lm/W
- Body of aluminium
- Luminaires are equipped with electronic driver

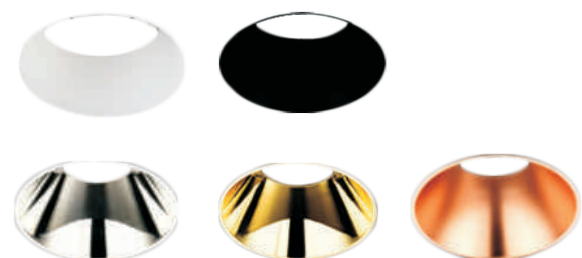
Order No.	Power(W)	Voltage(V)	CRI	Beam Angle(°)	SIZE(MM)
KDR-82108SQ-4	15	100-240	85	40	80*80*H103
KDR-82108SQ-5	20	100-240	85	40	100*100*H118
KDR-82108SQ-6	25	100-240	85	40	120*120*H133
KDR-82108SQ-8	30	100-240	85	40	150*150*H142

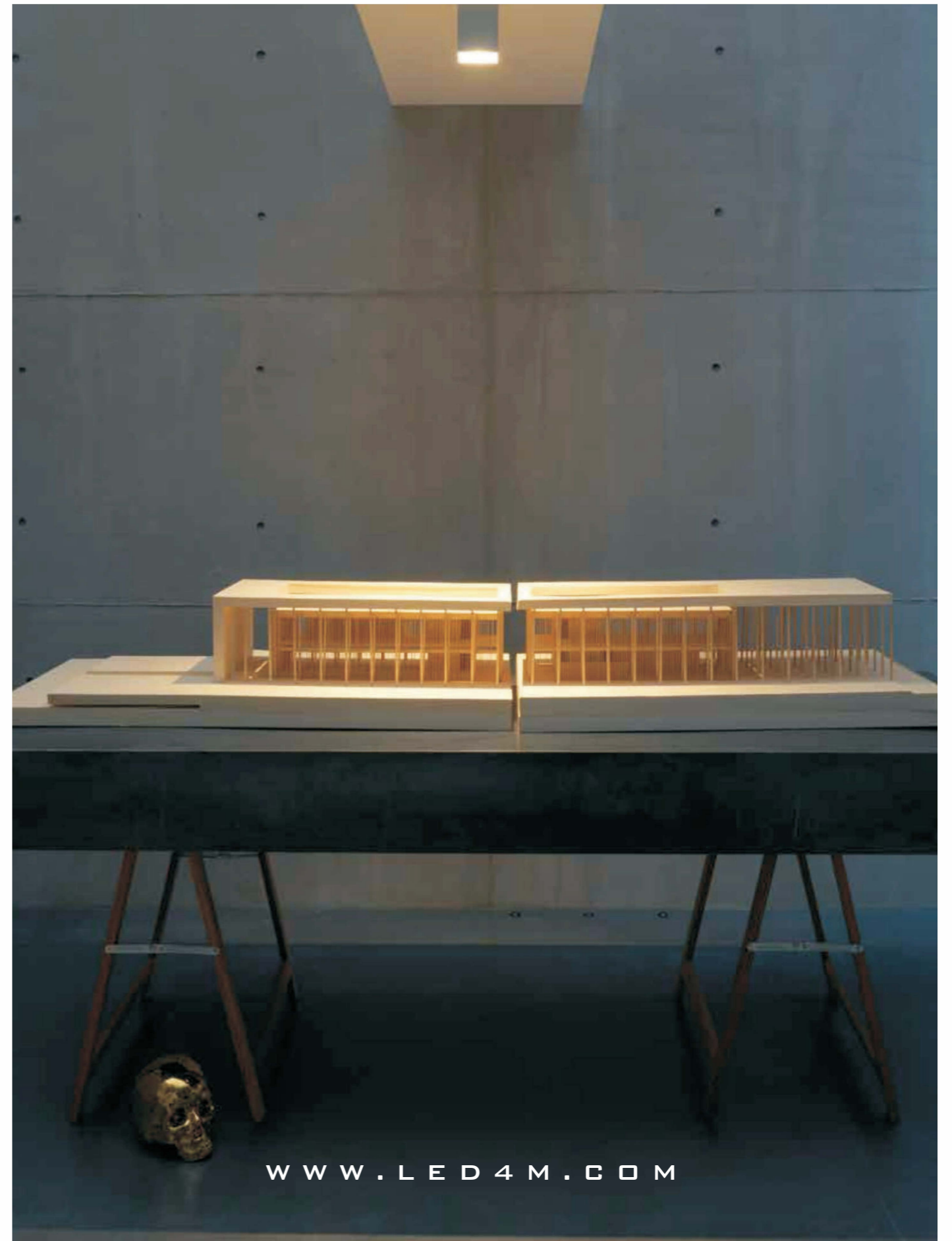


- Surface mounted with COB LED
- Narrow Beam Angle
- Efficiency:85Lm/W
- Body of aluminium
- Luminaires are equipped with electronic driver

Order No.	Power(W)	Voltage(V)	CRI	Beam Angle(°)	SIZE(MM)
KDR-22022RD	MR16-5-7	100-240	85	15/25	Φ75*H110
KDR-22022SQ	MR16-10	100-240	85	15/25	74*74*H140

Optional Colors :





i-TRACK SPOT LIGHT SERIES



WWW.LED4M.COM



CREE

CE RoHS IP20

- Surface mounted with COB LED
- Narrow Beam Angle
- Efficiency:85Lm/W
- Body of aluminium
- Luminaires are equipped with electronic driver

Order No.	Power(W)	Voltage(V)	CRI	Beam Angle(°)	SIZE(MM)
KDR-22017S	10	100-240	85	15/25	Φ50*H190
KDR-22017M	18	100-240	85	15/25	Φ60*H200
KDR-22017L	22	100-240	85	15/25	Φ75*H210



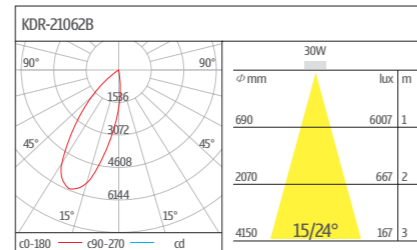
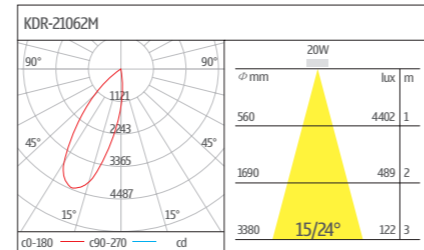
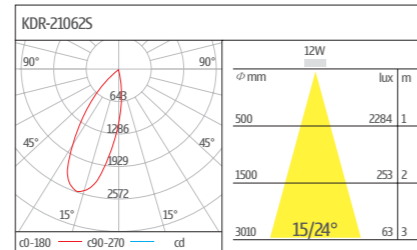
- Surface mounted with COB LED
- Narrow Beam Angle
- Efficiency:85Lm/W
- Body of aluminium
- Luminaires are equipped with electronic driver



- Surface mounted with COB LED
- Narrow Beam Angle
- Efficiency:85Lm/W
- Body of aluminium
- Luminaires are equipped with electronic driver

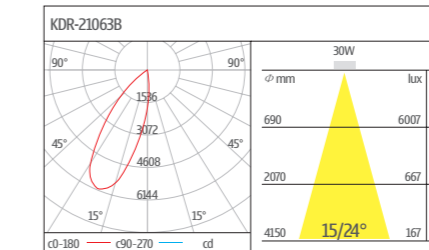
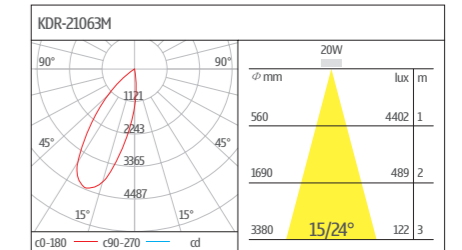
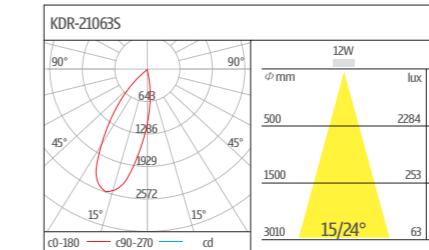
Order No.	Power(W)	Voltage(V)	CRI	Beam Angle(°)	SIZE (MM)
KDR-21062S	12	100-240	85	15/25	Φ60*L120*H210
KDR-21062M	18	100-240	85	15/25	Φ90*L138*H290
KDR-21062B	30	100-240	85	15/25	Φ110*L150*H310

Distribution Curve:



Order No.	Power(W)	Voltage(V)	CRI	Beam Angle(°)	SIZE (MM)
KDR-21063S	12	100-240	85	15/25	Φ60*L120*H210
KDR-21063M	18	100-240	85	15/25	Φ90*L138*H290
KDR-21063B	30	100-240	85	15/25	Φ110*L150*H310

Distribution Curve:



i-RECESSED LIGHT SERIES

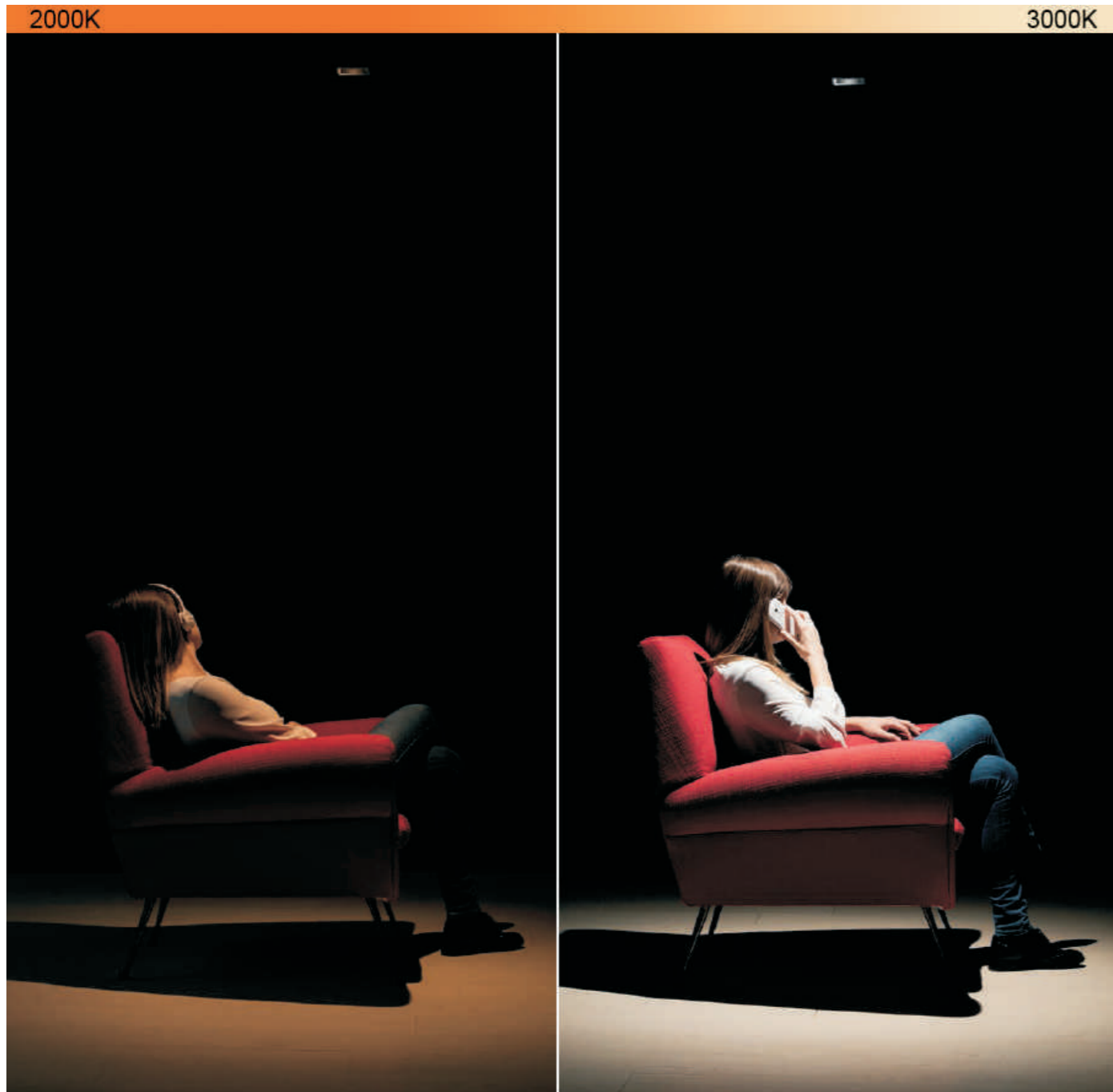


WWW.LED4M.COM



- Surface mounted with COB LED
- Narrow Beam Angle
- 光效: 85Lm/W
- Efficiency: 85Lm/W
- 主体使用压铸铝
- Body of aluminium die casting
- 配备LED电子驱动器
- Luminaires are equipped with electronic driver

Order No.	Power(W)	Voltage(V)	CRI	Beam Angle(°)	SIZE(MM)	CUT OUT(MM)
KDR-11012-2.5	7	100-240	85	24	Φ85*H78	Φ78
KDR-11012-4	15	100-240	85	24	Φ130*H115	Φ120
KDR-11012-5	30	100-240	85	24	Φ165*H143	Φ157
KDR-11012-6	40	100-240	85	24	Φ190*H155	Φ175

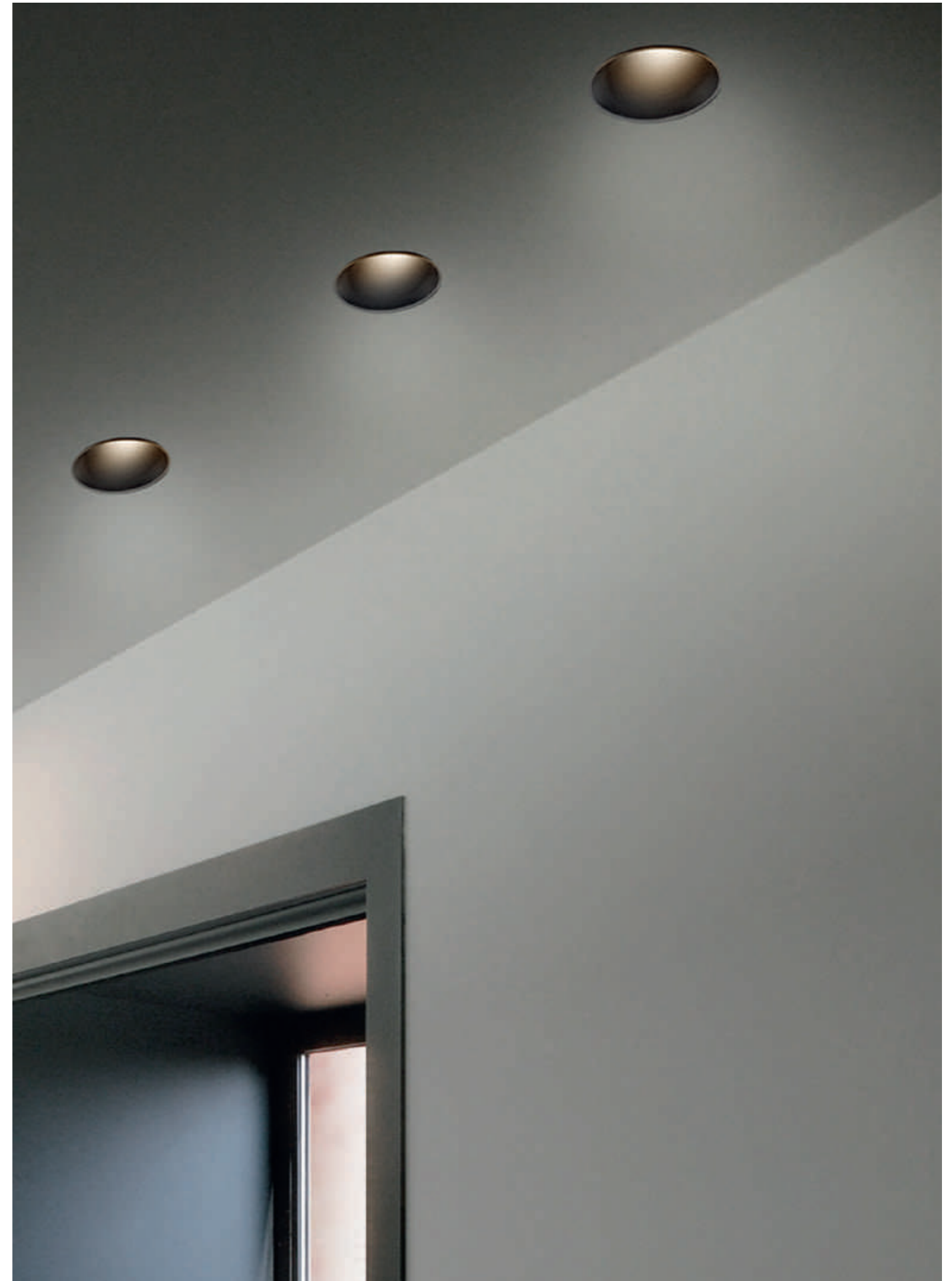


Warm Dimming

Warm Dimming is a new function where the colour temperature varies from 2000K to 3000K when light intensity is reduced (even down to 5%), but colour rendering remains constant.

All this is achieved with one driver only in an incredible design that also offers formal consistency, cost effectiveness and easy-to-install components.

Thanks to Warm Dimming, LED technology has won over the hospitality & living sectors too.

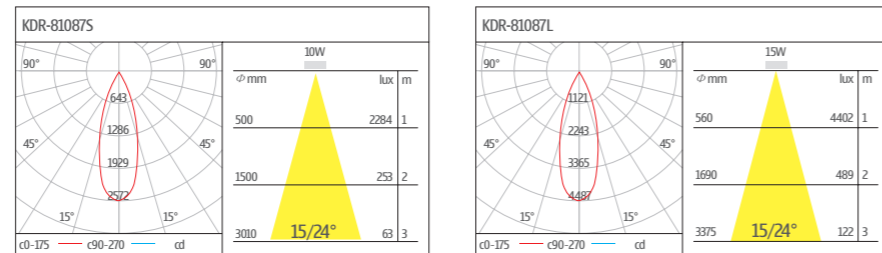




- Surface mounted with COB LED
- Narrow Beam Angle
- Efficiency:85Lm/W
- Body of aluminium die casting
- Luminaires are equipped with electronic driver

Order No.	Power(W)	Voltage(V)	CRI	Beam Angle(°)	SIZE (MM)	CUT OUT(MM)
KDR-81087S	10	100-240	85	15/24/40	Φ90	Φ80
KDR-81087L	15	100-240	85	15/24/40	Φ90	Φ80

配光曲线/Distribution Curve:



81087-1
Φ90
Φ80
Adjustable

81087-2
Φ90
Φ80
Adjustable

81087-3
Φ95
Φ85
Adjustable

81087-4
95*95
85*85
Adjustable

81087-5
Φ107
Φ91
Adjustable

81087-6
Φ90
Φ80
NON-Adjustable

81087-7
Φ85
Φ77
NON-Adjustable

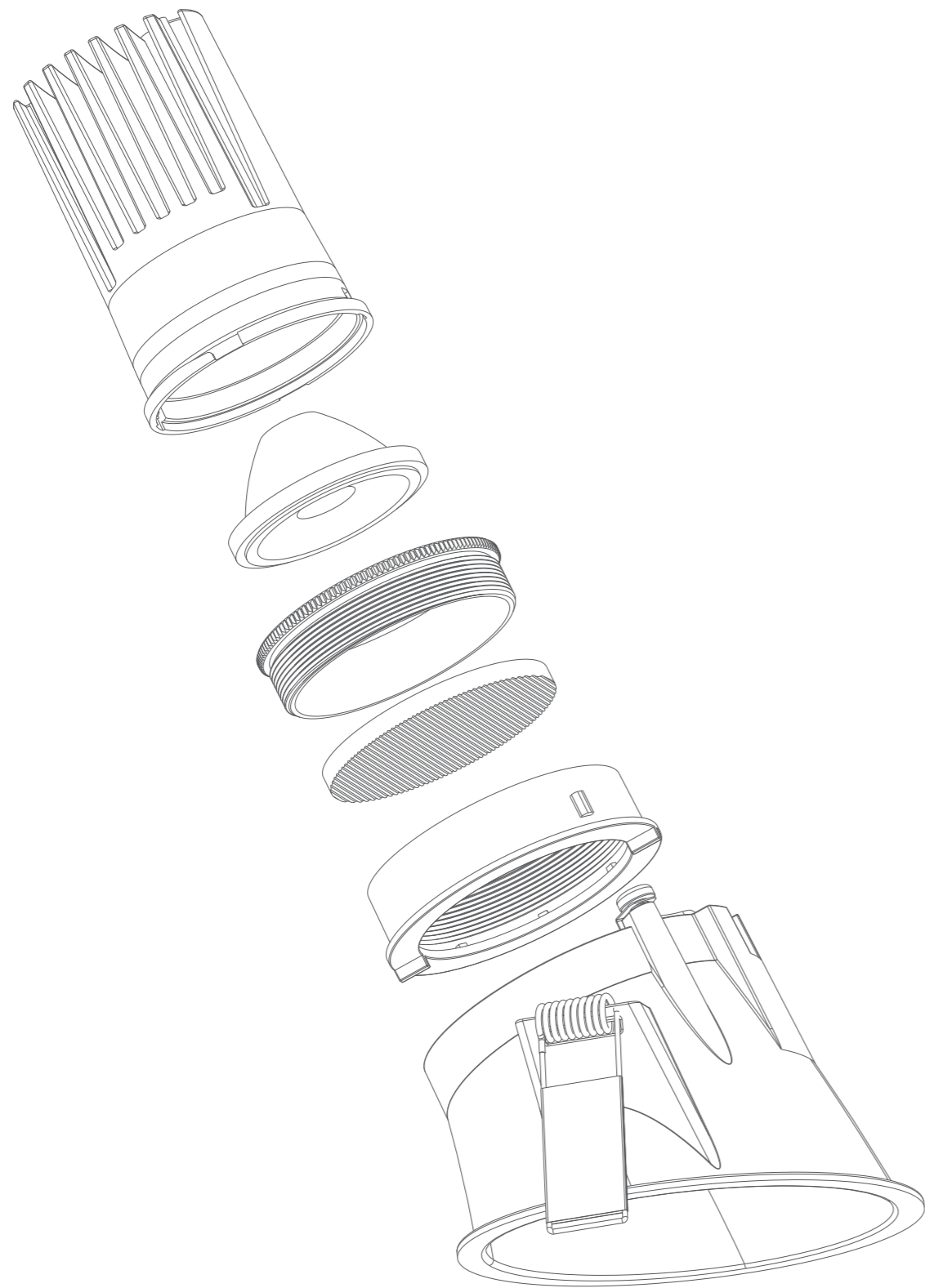
81087-8
Φ100
Φ90
Adjustable

81087-10

81087-11

81087-9
105*105
98*98
Adjustable

81087-9B
205*105
195*98
Adjustable



- Surface mounted with COB LED
- Narrow Beam Angle
- Efficiency:85Lm/W
- Body of aluminium die casting
- Luminaires are equipped with electronic driver

Order No.	Power(W)	Voltage(V)	CRI	Beam Angle(°)	SIZE(MM)	CUT OUT(MM)
KDR-81085S	8	100-240	85	15	Φ95*H103	Φ90
KDR-81085B	12	100-240	85	15	Φ125*H133	Φ115



- 采用大功率的COB光源
- Surface mounted with COB LED
- 窄光束角
- Narrow Beam Angle
- 光效: 85Lm/W
- Efficiency:85Lm/W
- 主体使用压铸铝
- Body of aluminium die casting
- 配备LED电子驱动器
- Luminaires are equipped with electronic driver

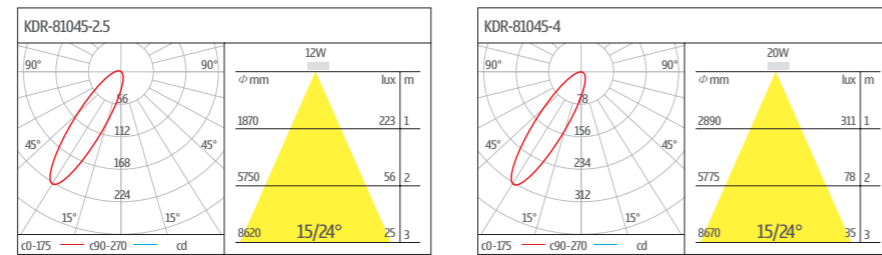
Order No.	Power(W)	Voltage(V)	CRI	Beam Angle(°)	SIZE(MM)	CUT OUT(MM)
KDR-81086S	8	100-240	85	15/30	95*95*H95	82*82
KDR-81086B	12	100-240	85	15/30	115*115*H120	105*105



- Surface mounted with COB LED
- Narrow Beam Angle
- Efficiency:85Lm/W
- Body of aluminium
- Luminaires are equipped with electronic driver

Order No.	Power(W)	Voltage(V)	CRI	Beam Angle(°)	SIZE (MM)	CUT OUT(MM)
KDR-81045-2.5	12	100-240	85	15/24/40/60	Φ95*H100	Φ80
KDR-81045-3.5	15	100-240	85	15/24/40/60	Φ130*H110	Φ115
KDR-81045-4	20	100-240	85	15/24/40/60	Φ145*H110	Φ125
KDR-81045-5	24	100-240	85	15/24/40/60	Φ163*H110	Φ145
KDR-81045-6	28	100-240	85	15/24/40/60	Φ192*H130	Φ165
KDR-81045-8	35	100-240	85	15/24/40/60	Φ233*H200	Φ210

配光曲线/Distribution Curve:

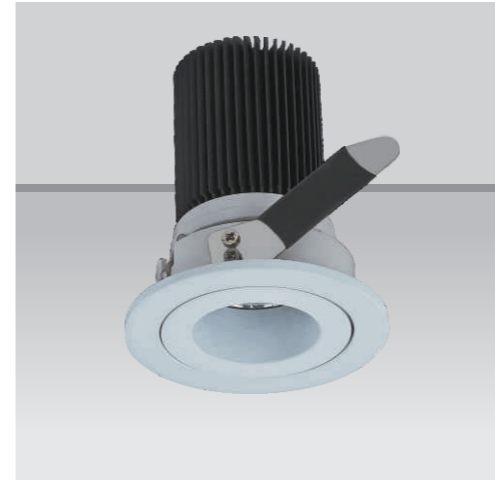




- Surface mounted with COB LED
- Narrow Beam Angle
- Efficiency:85Lm/W
- Body of aluminium die casting
- Luminaires are equipped with electronic driver



Order No.	Power(W)	Voltage(V)	CRI	Beam Angle(°)	SIZE (MM)	CUT OUT(MM)
KDR-33007S	5	100-240	85	15/24	Φ70*H80	Φ65
KDR-33007B	7	100-240	85	15/24	Φ81*H85	Φ75
KDR-33007SQ	7	100-240	85	15/24	81*81*H85	Φ75



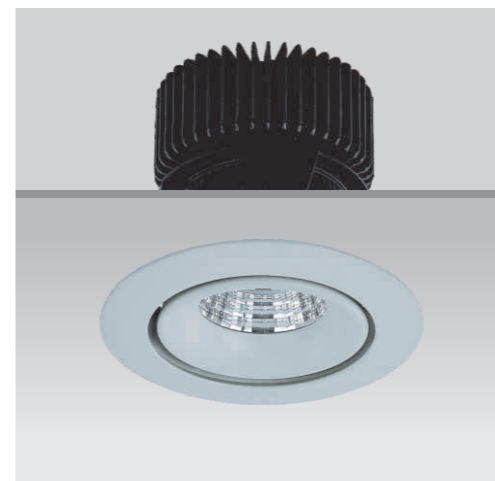
- Surface mounted with COB LED
- Narrow Beam Angle
- Efficiency:85Lm/W
- Luminaires are equipped with electronic driver

Order No.	Power(W)	Voltage(V)	CRI	Beam Angle(°)	SIZE (MM)	CUT OUT(MM)
KDR-81043-5	5	100-240	85	15/25	Φ72*H70	Φ60
KDR-81043-10	10	100-240	85	15/25	Φ85*H100	Φ75



- Surface mounted with COB LED
- Narrow Beam Angle
- Efficiency:85Lm/W
- Body of aluminium die casting
- Luminaires are equipped with electronic driver

Order No.	Power(W)	Voltage(V)	CRI	Beam Angle(°)	SIZE (MM)	CUT OUT(MM)
KDR-33008S	5	100-240	85	15/24/40	Φ57*H75	Φ52
KDR-33008M	7	100-240	85	15/24/40	Φ75*H85	Φ68
KDR-33008B	7	100-240	85	15/24/40	Φ85*H85	Φ78



- Surface mounted with COB LED
- Narrow Beam Angle
- Efficiency:85Lm/W
- Body of aluminium
- Luminaires are equipped with electronic driver

Order No.	Power(W)	Voltage(V)	CRI	Beam Angle(°)	SIZE (MM)	CUT OUT(MM)
KDR-81038-2.5	7	100-240	85	15/24	Φ95*H90	Φ80
KDR-81038-3.5	12	100-240	85	15/24	Φ115*H100	Φ100
KDR-81038-4	15	100-240	85	15/24	Φ145*H105	Φ130

i-WATER-PROOF RECESSED LIGHT SERIES



- Surface mounted with SMD LED
- Wide Beam Angle
- Efficiency:85Lm/W
- Body of aluminium die casting
- Luminaires are equipped with electronic driver



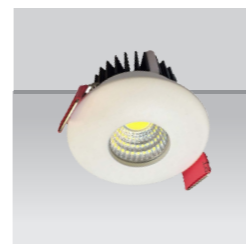
Order No.	Power(W)	Voltage(V)	CRI	Beam Angle(°)	SIZE (MM)	CUT OUT(MM)
KDR-81095RD-S2.5	SMD 5	100-240	85	120	Φ90*H67	Φ80
KDR-81095RD-S3	SMD 10	100-240	85	120	Φ108*H72	Φ98
KDR-81095SQ-S2.5	SMD 5	100-240	85	120	90*90*H67	Φ80
KDR-81095SQ-S3	SMD 10	100-240	85	120	108*108*H72	Φ98



i-CABINET LIGHT SERIES



- Surface mounted with high power LED
- Narrow Beam Angle
- Efficiency:85Lm/W
- Body of aluminium
- Luminaires are equipped with electronic driver



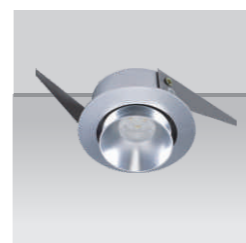
Φ38mm (Cut out)

Order No.	Power(W)	Voltage(V)	CRI	Beam Angle(°)	SIZE (MM)
KDR-81001	1*1	100-240	85	8/15	Φ38*H27



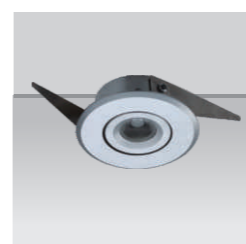
Φ41mm (Cut out)

Order No.	Power(W)	Voltage(V)	CRI	Beam Angle(°)	SIZE (MM)
KDR-81005	1*1	100-240	85	60	Φ43*H27



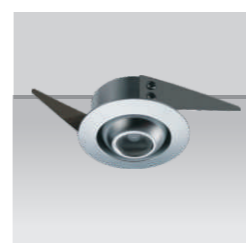
Φ48mm (Cut out)

Order No.	Power(W)	Voltage(V)	CRI	Beam Angle(°)	SIZE (MM)
KDR-81006	1*1	100-240	85	8/15/30	Φ60*H30
KDR-81007	1*1	100-240	85	8/15/30	Φ60*H33



Φ48mm (Cut out)

Order No.	Power(W)	Voltage(V)	CRI	Beam Angle(°)	SIZE (MM)
KDR-81009	1*3W	100-240	85	8/15/30	Φ60*H24







Φ48mm (Cut out)

Order No.	Power(W)	Voltage(V)	CRI	Beam Angle(°)	SIZE (MM)
KDR-81010	1*3W	100-240	85	8/15/30	Φ60*H38



- Surface mounted with high power LED
- Narrow Beam Angle
- Efficiency:85Lm/W
- Body of aluminium
- Luminaires are equipped with electronic driver

	Order No.	Power(W)	Voltage(V)	CRI	Beam Angle(°)	SIZE(MM)
	KDR-82053-1	1*1	100-240	85	60	Φ23*H25
	KDR-82053-2	1*1	100-240	85	10	Φ21*H25
	KDR-82053-3	1*1	100-240	85	15/24	Φ21*H25
	KDR-82053-4	1*1	100-240	85	15/24	21*21*H25



i-GRILLE LIGHT SERIES



KDR-83011R-1	KDR-83012R-1	KDR-83013R-1	KDR-83014R-1	CE RoHS IP20
9W	15W	20W	30W	
100-240V	100-240V	100-240V	100-240V	
Ra85	Ra85	Ra85	Ra85	
15/25/40°	15/25/40°	15/25/40°	15/25/40°	
Φ115*H84MM	Φ145*H100MM	Φ170*H115MM	Φ190*H132MM	
Φ95MM	Φ125MM	Φ145MM	Φ175MM	CUT OUT:

BRIDGELUX



KDR-83011-1	KDR-83012-1	CE RoHS IP20
9W	15W	
100-240V	100-240V	
Ra85	Ra85	
15/25/40°	15/25/40°	
115*115*H84MM	145*145*H100MM	
95*95MM	125*125MM	CUT OUT:

BRIDGELUX



KDR-83011-2	KDR-83012-2	CE RoHS IP20
2*9W	2*15W	
100-240V	100-240V	
Ra85	Ra85	
15/25/40°	15/25/40°	
210*115*H84MM	265*145*H100MM	
190*95MM	240*125MM	CUT OUT:

BRIDGELUX



KDR-83011-3	KDR-83012-3	CE RoHS IP20
3*9W	3*15W	
100-240V	100-240V	
Ra85	Ra85	
15/25/40°	15/25/40°	
320*115*H84MM	400*145*H100MM	
300*95MM	375*125MM	CUT OUT:

BRIDGELUX



KDR-83023T-1	KDR-83023T-2	KDR-83023T-3	
10W	2*10W	3*10W	CE RoHS IP20
100-240V	100-240V	100-240V	
Ra85	Ra85	Ra85	
15/25/40°	15/25/40°	15/25/40°	
95*95*H110mm	165*95*H110mm	230*95*H110mm	
100*95mm	170*95mm	240*95mm	CUT OUT:
CREE			



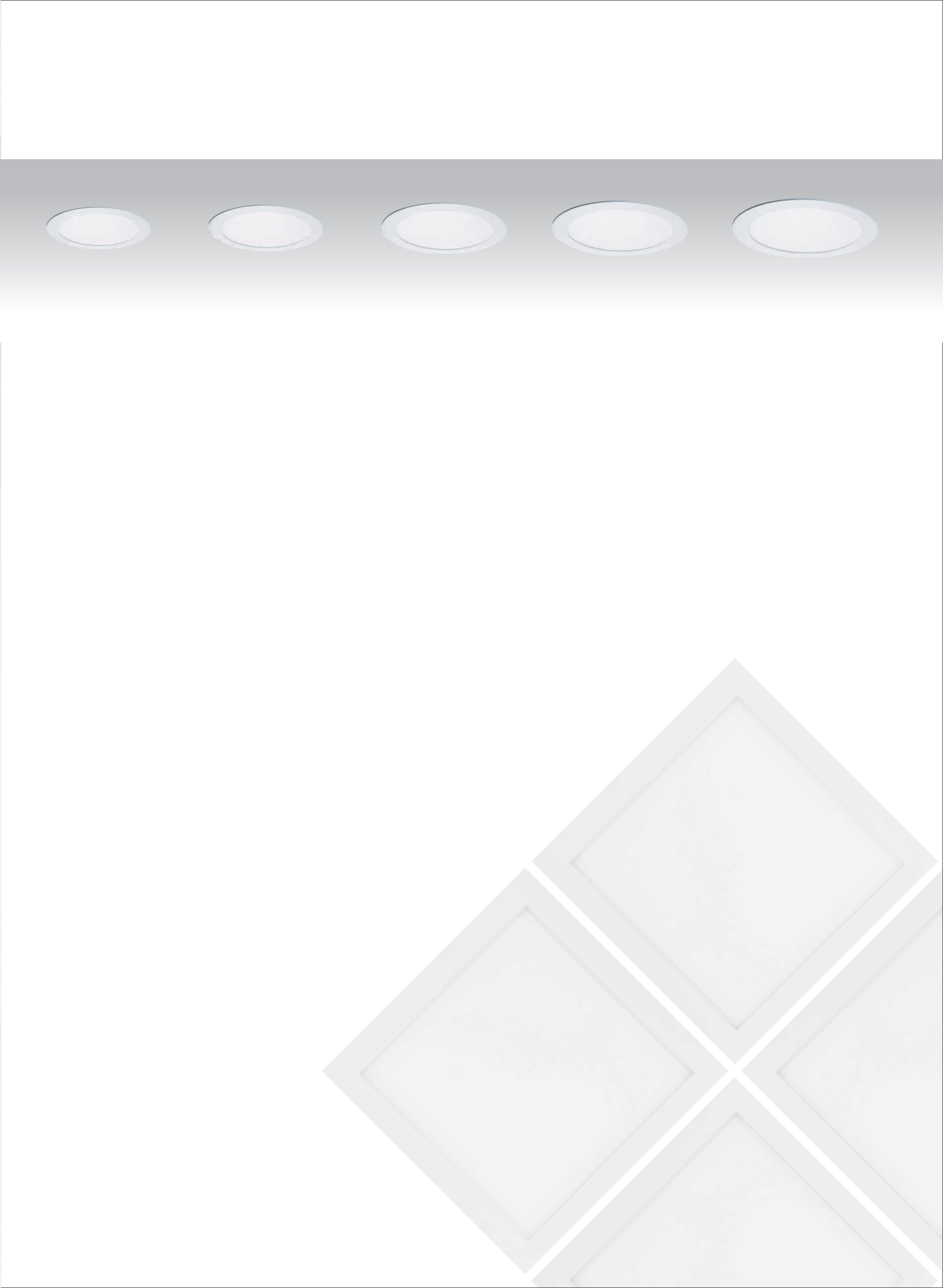
KDR-83023A-1	KDR-83023A-2	KDR-83023A-3	
10W	2*10W	3*10W	CE RoHS IP20
100-240V	100-240V	100-240V	
Ra85	Ra85	Ra85	
15/25/40°	15/25/40°	15/25/40°	
110*110*H110mm	180*110*H110mm	250*110*H110mm	
100*100mm	170*100mm	240*100mm	CUT OUT:
CREE			



i-PANEL LIGHT SERIES



WWW.LED4M.COM





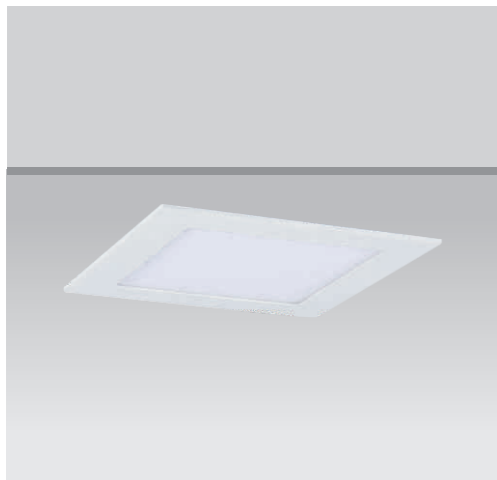
- Surface mounted with SMD LED
- Wide Beam Angle
- Efficiency:85Lm/W
- Body of aluminium die casting
- Luminaires are equipped with electronic driver

Order No.	Power(W)	Voltage(V)	CRI	Beam Angle(°)	SIZE(MM)	CUT OUT(MM)
KDR-81024R-3W/90	3	100-240	85	120	Φ90*H20	Φ80
KDR-81024R-4W/105	4	100-240	85	120	Φ105*H20	Φ95
KDR-81024R-6W/120	6	100-240	85	120	Φ120*H20	Φ105
KDR-81024R-9W/150	9	100-240	85	120	Φ150*H20	Φ135
KDR-81024R-12W/170	12	100-240	85	120	Φ170*H20	Φ155
KDR-81024R-15W/195	15	100-240	85	120	Φ195*H20	Φ175
KDR-81024R-18W/225	18	100-240	85	120	Φ225*H20	Φ205
KDR-81024R-24W/300	24	100-240	85	120	Φ300*H20	Φ285

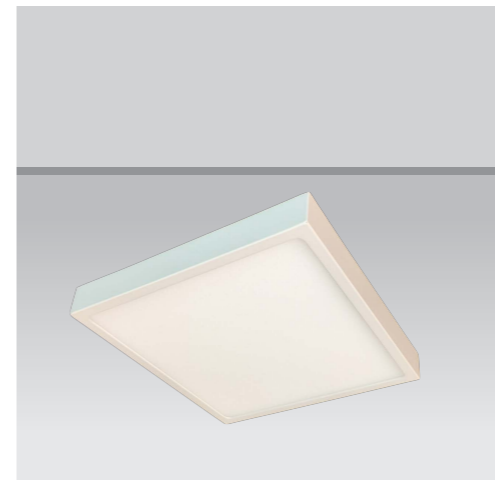


- Surface mounted with SMD LED
- Wide Beam Angle
- Efficiency:85Lm/W
- Body of aluminium die casting
- Luminaires are equipped with electronic driver

Order No.	Power(W)	Voltage(V)	CRI	Beam Angle(°)	SIZE(MM)	CUT OUT(MM)
KDR-81028R-6W	6	100-240	85	120	Φ120*H40	
KDR-81028R-12W	12	100-240	85	120	Φ170*H40	
KDR-81028R-18W	18	100-240	85	120	Φ220*H40	
KDR-81028R-25W	25	100-240	85	120	Φ300*H40	



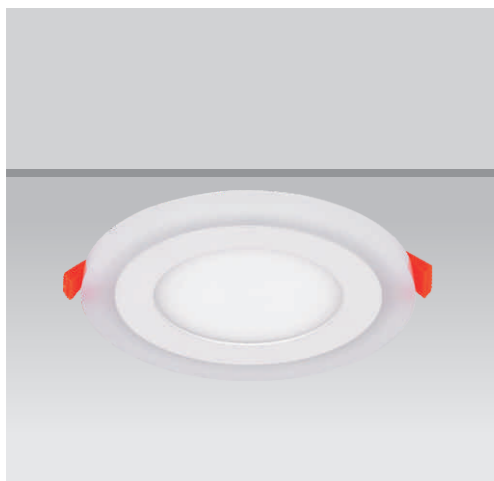
Order No.	Power(W)	Voltage(V)	CRI	Beam Angle(°)	SIZE(MM)	CUT OUT(MM)
KDR-81024S-3W/90	3	100-240	85	120	90*90*H20	80*80
KDR-81024S-4W/105	4	100-240	85	120	105*105*H20	95*95
KDR-81024S-6W/120	6	100-240	85	120	120*120*H20	105*105
KDR-81024S-9W/145	9	100-240	85	120	150*150*H20	135*135
KDR-81024S-12W/170	12	100-240	85	120	170*170*H20	155*155
KDR-81024S-15W/195	15	100-240	85	120	195*195*H20	175*175
KDR-81024S-18W/225	18	100-240	85	120	225*225*H20	205*205
KDR-81024S-24W/300	20	100-240	85	120	300*300*H20	285*285



Order No.	Power(W)	Voltage(V)	CRI	Beam Angle(°)	SIZE(MM)	CUT OUT(MM)
KDR-81028S-6W	6	100-240	85	120	120*120*H40	
KDR-81028S-12W	12	100-240	85	120	170*170*H40	
KDR-81028S-18W	18	100-240	85	120	220*220*H40	
KDR-81028S-25W	25	100-240	85	120	300*300*H40	



- Surface mounted with SMD LED
- Wide Beam Angle
- Efficiency:85Lm/W
- Body of aluminium die casting
- Luminaires are equipped with electronic driver



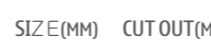
Order No.	Power(W)	Voltage(V)	CRI	Beam Angle(°)	SIZE(MM)	CUT OUT(MM)
KDR-81033R-6W	3+3	100-240	85	120	Φ105*H20	Φ75
KDR-81033R-9W	6+3	100-240	85	120	Φ145*H20	Φ110
KDR-81033R-16W	12+4	100-240	85	120	Φ190*H20	Φ160
KDR-81033R-24W	18+6	100-240	85	120	Φ240*H20	Φ210



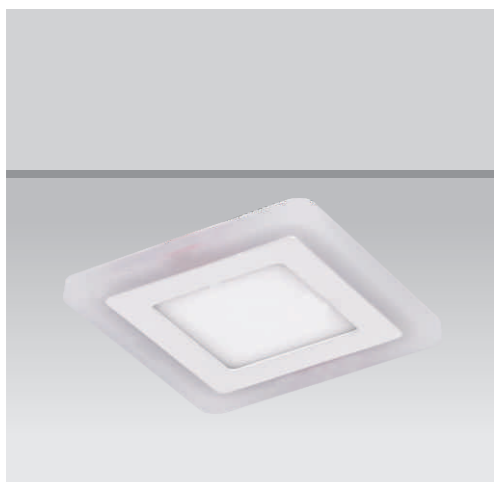
- Surface mounted with SMD LED
- Wide Beam Angle
- Efficiency:85Lm/W
- Body of aluminium die casting
- Luminaires are equipped with electronic driver



Order No.	Power(W)	Voltage(V)	CRI	Beam Angle(°)	SIZE(MM)	CUT OUT(MM)
KDR-81066RD-2.5	7	100-240	85	120	Φ90*H40	Φ75
KDR-81066RD-4	16	100-240	85	120	Φ120*H40	Φ110
KDR-81066RD-6	24	100-240	85	120	Φ170*H40	Φ160
KDR-81066RD-8	32	100-240	85	120	Φ225*H40	Φ210
KDR-81066RD-10	48	100-240	85	120	Φ300*H40	Φ280



Order No.	Power(W)	Voltage(V)	CRI	Beam Angle(°)	SIZE(MM)	CUT OUT(MM)
KDR-81033S-6W	3+3	100-240	85	120	105*105*H20	75*75
KDR-81033S-9W	6+3	100-240	85	120	145*145*H20	110*110
KDR-81033S-16W	12+4	100-240	85	120	190*190*H20	160*160
KDR-81033S-24W	18+6	100-240	85	120	240*240*H20	210*210



Order No.	Power(W)	Voltage(V)	CRI	Beam Angle(°)	SIZE(MM)	CUT OUT(MM)
KDR-81066SQ-2.5	7	100-240	85	120	90*90*H40	75*75
KDR-81066SQ-4	16	100-240	85	120	120*120*H40	110*110
KDR-81066SQ-6	24	100-240	85	120	170*170*H40	160*160
KDR-81066SQ-8	32	100-240	85	120	225*225*H40	210*210
KDR-81066SQ-10	48	100-240	85	120	300*300*H40	280*280





- Wide Beam Angle
- Efficiency:85Lm/W
- Body of aluminium die casting
- Luminaires are equipped with electronic driver



Order No.	Power(W)	Voltage(V)	CRI	Beam Angle(°)	SIZE(MM)	CUT OUT(MM)
KDR-81034RD-6	6	100-240	85	120	Φ90*H30	Φ75
KDR-81034RD-9	9	100-240	85	120	Φ128*H30	Φ105
KDR-81034RD-12	12	100-240	85	120	Φ155*H30	Φ130
KDR-81034RD-15	15	100-240	85	120	Φ170*H30	Φ155
KDR-81034RD-18	18	100-240	85	120	Φ200*H30	Φ175
KDR-81034RD-20	20	100-240	85	120	Φ225*H30	Φ205
KDR-81034RD-24	24	100-240	85	120	Φ275*H30	Φ225



- Wide Beam Angle
- Efficiency:85Lm/W
- Body of aluminium die casting
- Luminaires are equipped with electronic driver



Order No.	Power(W)	Voltage(V)	CRI	Beam Angle(°)	SIZE(MM)	CUT OUT(MM)
KDR-81035RD-8	8	100-240	85	120	Φ90*H30	
KDR-81035RD-16	16	100-240	85	120	Φ145*H30	
KDR-81035RD-22	22	100-240	85	120	Φ173*H30	
KDR-81035RD-30	30	100-240	85	120	Φ220*H30	

Order No.	Power(W)	Voltage(V)	CRI	Beam Angle(°)	SIZE(MM)	CUT OUT(MM)
KDR-81034SQ-6	6	100-240	85	120	90*90*H30	75*75
KDR-81034SQ-9	9	100-240	85	120	130*130*H30	105*105
KDR-81034SQ-15	15	100-240	85	120	170*170*H30	155*155
KDR-81034SQ-20	20	100-240	85	120	225*225*H30	205*205

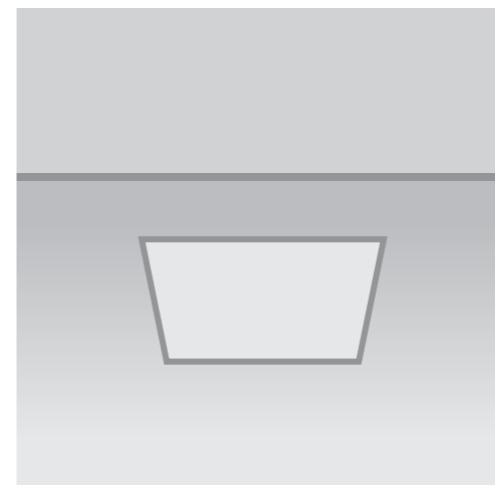


Order No.	Power(W)	Voltage(V)	CRI	Beam Angle(°)	SIZE(MM)	CUT OUT(MM)
KDR-81035SQ-8	8	100-240	85	120	90*90*H30	
KDR-81035SQ-16	16	100-240	85	120	145*145*H30	
KDR-81035SQ-22	22	100-240	85	120	173*173*H30	
KDR-81035SQ-30	30	100-240	85	120	220*220*H30	



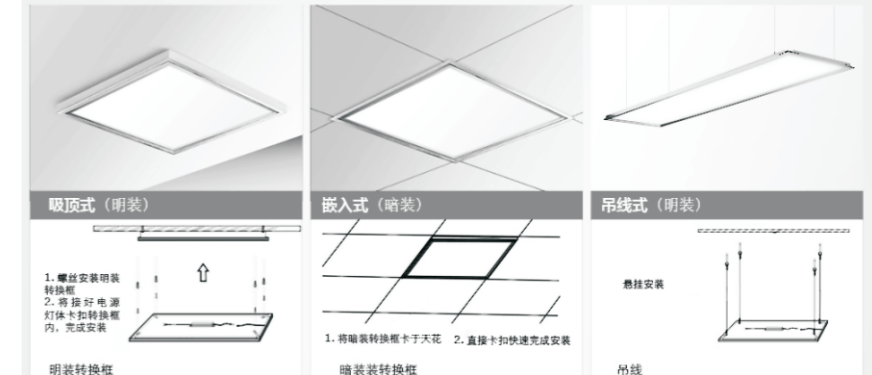


- Surface mounted with low power SMD LED
- Wide Beam Angle
- Body of aluminium die casting
- Luminaires are equipped with electronic driver



Order No.	Power(W)	Voltage(V)	CRI	Beam Angle(°)	SIZE(MM)	CUT OUT(MM)
KDR-PB300	10/20	100-240	85	120	300*300*H11	295*295
KDR-PB360	24/36	100-240	85	120	300*600*H11	295*595
KDR-PB600	36/48	100-240	85	120	600*600*H11	595*595
KDR-PB3120	36/48	100-240	85	120	300*1200*H11	295*1195
KDR-PB6120	60/72	100-240	85	120	600*1200*H11	595*1195

Installation 安装方式



i-T5/T8 LIGHT SERIES



- Surface mounted with SMD
- Efficiency:85Lm/W
- Luminaires are equipped with electronic driver

Order No.	Power(W)	Voltage(V)	CRI	Beam Angle(°)	SIZE(MM)
KDR-SFT8-1-6	T8-8	100-240	85	120	660*60*100
KDR-SFT8-1-12	T8-16	100-240	85	120	1260*60*100



- Surface mounted with SMD
- Wide Beam Angle
- Efficiency:85Lm/W
- Body of plastic
- Luminaires are equipped with electronic driver

Order No.	Power(W)	Voltage(V)	CRI	Beam Angle(°)	SIZE(MM)
KDR-SFT8-2-6	T8-2*8	100-240	85	120	660*150*100
KDR-SFT8-2-12	T8-2*16	100-240	85	120	1280*150*100



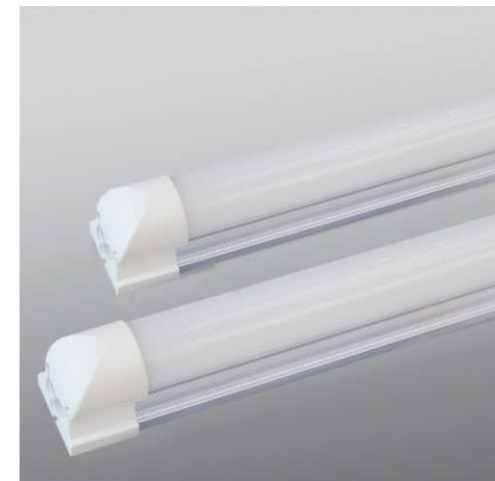
- Surface mounted with SMD
- Wide Beam Angle
- Efficiency:85Lm/W
- Body of aluminium
- Luminaires are equipped with electronic driver

Order No.	Power(W)	Voltage(V)	CRI	Beam Angle(°)	SIZE(MM)
KDR-T5-0.3M	4	100-240	85	120	310*21*H32
KDR-T5-0.6M	8	100-240	85	120	570*21*H32
KDR-T5-0.9M	12	100-240	85	120	870*21*H32
KDR-T5-1.2M	14	100-240	85	120	1170*21*H32



- Surface mounted with SMD
- Wide Beam Angle
- Efficiency:85Lm/W
- Body of aluminium
- Luminaires are equipped with electronic driver

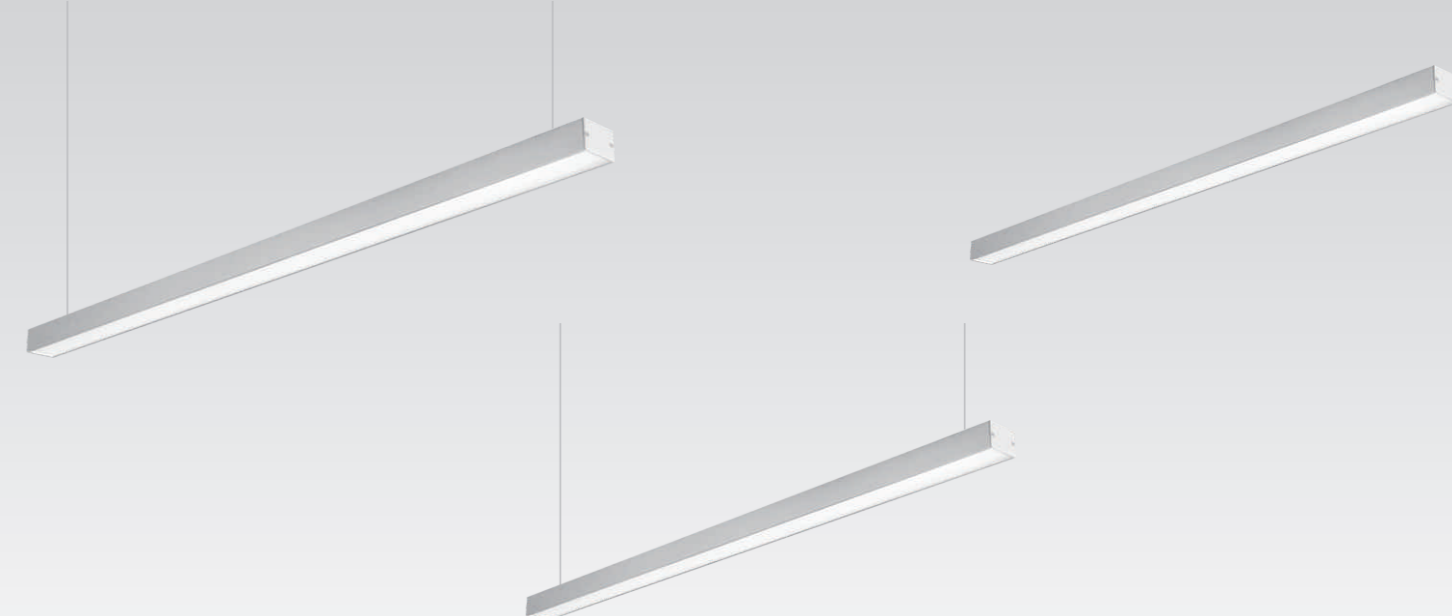
Order No.	Power(W)	Voltage(V)	CRI	Beam Angle(°)	SIZE(MM)
KDR-T8-0.6M-A	9	100-240	85	120	Φ26*590
KDR-T8-0.9M-A	13	100-240	85	120	Φ26*894
KDR-T8-1.2M-A	18	100-240	85	120	Φ26*1198



- Surface mounted with high power LED
- Wide Beam Angle
- Efficiency:85Lm/W
- Body of aluminium
- Luminaires are equipped with electronic driver

Order No.	Power(W)	Voltage(V)	CRI	Beam Angle(°)	SIZE(MM)
KDR-T8-0.6M-B	9	100-240	85	120	600*34*H40
KDR-T8-0.9M-B	13	100-240	85	120	900*34*H40
KDR-T8-1.2M-B	18	100-240	85	120	1200*34*H40

i-OFFICE LIGHT SERIES



- Wide Beam Angle
- Efficiency: 85lm/W
- Body of aluminium
- Luminaires are equipped with electronic driver

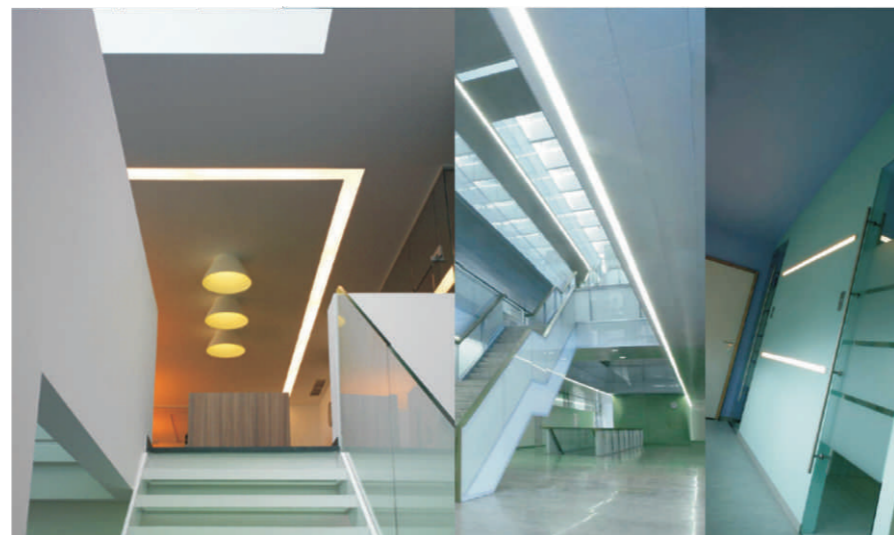
Order No.	Power(W)	Voltage(V)	CRI	Beam Angle(°)	SIZE(MM)
KDR-OL809	28	100-240	85	120	L1180*W35*H67
KDR-OL810	28	100-240	85	120	L1180*W50*H50





- Surface mounted with SMD LED
- Wide Beam Angle
- Efficiency:85Lm/W
- Body of aluminium
- Luminaires are equipped with electronic driver

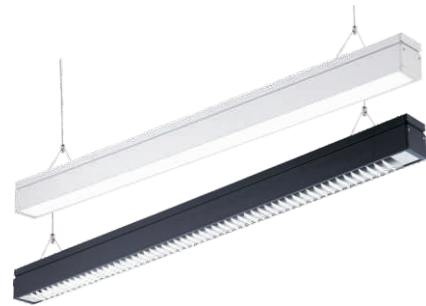
Order No.	Power(W)	Voltage(V)	CRI	Beam Angle(°)	SIZE (MM)	CUT OUT(MM)
KDR-OL811-1	28	100-240	85	120	L1180*W65*H50	Φ95
KDR-OL811-2	30	100-240	85	120	L1180*W65*H32	Φ142
KDR-OL811-3	56	100-240	85	120	L1180*W90*H32	Φ175



- Surface mounted with SMD LED
- Wide Beam Angle
- Efficiency:85Lm/W
- Luminaires are equipped with electronic driver

Order No.	Power(W)	Voltage(V)	CRI	Beam Angle(°)	SIZE (MM)	CUT OUT(MM)
KDR-OL812-1	28	100-240	85	90	L1180*W33*H85	
KDR-OL812-2	28	100-240	85	90	L1180*W18*H48.5	





- Surface mounted with SMD LED
- Wide Beam Angle
- Efficiency:85Lm/W
- Body of aluminium
- Luminaires are equipped with electronic driver

Order No.	Power(W)	Voltage(V)	CRI	Beam Angle(°)	SIZE(MM)
KDR-OL801	18	100-240	85	120	L1200*W70*H80



- Surface mounted with SMD LED
- Wide Beam Angle
- Efficiency:85Lm/W
- Body of aluminium
- Luminaires are equipped with electronic driver

Order No.	Power(W)	Voltage(V)	CRI	Beam Angle(°)	SIZE(MM)
KDR-OL803	27	100-240	85	120	L1200*W200*H55
KDR-OL803	36	100-240	85	120	L1200*W300*H55



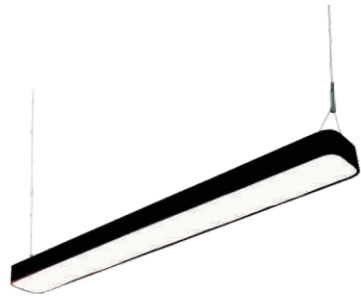
- Surface mounted with SMD LED
- Wide Beam Angle
- Efficiency:85Lm/W
- Body of aluminium
- Luminaires are equipped with electronic driver

Order No.	Power(W)	Voltage(V)	CRI	Beam Angle(°)	SIZE(MM)
KDR-OL802	18	100-240	85	270	L1170*W42*H50



- Surface mounted with SMD LED
- Wide Beam Angle
- Efficiency:85Lm/W
- Body of aluminium
- Luminaires are equipped with electronic driver

Order No.	Power(W)	Voltage(V)	CRI	Beam Angle(°)	SIZE(MM)
KDR-OL804	36	100-240	85	120	L1200*W250*H70



- Surface mounted with SMD LED
- Wide Beam Angle
- Efficiency:85Lm/W
- Body of aluminium
- Luminaires are equipped with electronic driver

Order No.	Power(W)	Voltage(V)	CRI	Beam Angle(°)	SIZE(MM)
KDR-OL805	18	100-240	85	120	L1200*W85*H55



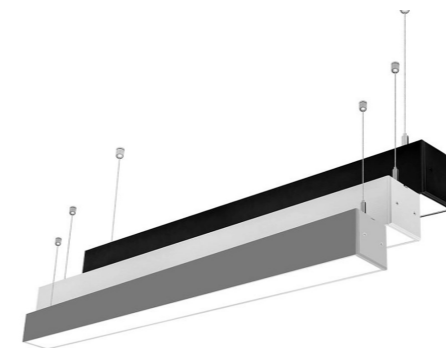
- Surface mounted with SMD LED
- Wide Beam Angle
- Efficiency:85Lm/W
- Body of aluminium
- Luminaires are equipped with electronic driver

Order No.	Power(W)	Voltage(V)	CRI	Beam Angle(°)	SIZE(MM)
KDR-OL807	36	100-240	85	120	L1200*W250*H65



- Surface mounted with SMD LED
- Wide Beam Angle
- Efficiency:85Lm/W
- Luminaires are equipped with electronic driver

Order No.	Power(W)	Voltage(V)	CRI	Beam Angle(°)	SIZE(MM)
KDR-OL806	36	100-240	85	270	L1220*W300*H80



- Surface mounted with SMD LED
- Wide Beam Angle
- Efficiency:85Lm/W
- Body of aluminium
- Luminaires are equipped with electronic driver

Order No.	Power(W)	Voltage(V)	CRI	Beam Angle(°)	SIZE(MM)
KDR-OL808	2*16	100-240	85	120	L1250*W180*H40

i-SENSOR CABINET LIGHT SERIES



型号 Order No.	功率 Power(W)	电压 Voltage(V)	显指 CRI	光束角 Beam Angle(°)	尺寸 SIZE(MM)
KDR-SS-400	8	DC12V	85	180	400*40*9.5
KDR-SS-600	9	DC12V	85	180	600*40*9.5
KDR-SS-900	12	DC12V	85	180	900*40*9.5
KDR-PIR-400	8	DC12V	85	180	400*40*9.5
KDR-PIR-600	9	DC12V	85	180	600*40*9.5
KDR-PIR-900	12	DC12V	85	180	900*40*9.5



手扫感应
KDR-SS

人体感应
KDR-PIR



型号 Order No.	功率 Power(W)	电压 Voltage(V)	显指 CRI	光束角 Beam Angle(°)	尺寸 SIZE(MM)
KDR-YJ-362	2	DC12V	85	180	362*16*30.5
KDR-YJ-400	2.2	DC12V	85	180	400*16*30.5
KDR-YJ-562	3.2	DC12V	85	180	562*16*30.5
KDR-YJ-762	4.5	DC12V	85	180	762*16*30.5
KDR-YJ-862	5	DC12V	85	180	862*16*30.5
KDR-YJ-962	5.6	DC12V	85	180	962*16*30.5
KDR-YJ-1060	6.2	DC12V	85	180	1060*16*30.5
KDR-YJ-1162	6.8	DC12V	85	180	1162*16*30.5



红外感应



型号 Order No.	功率 Power(W)	电压 Voltage(V)	显指 CRI	光束角 Beam Angle(°)	尺寸 SIZE(MM)
KDR-MG-400	4	DC12V	85	180	400*40*9.5
KDR-MG-560	5	DC12V	85	180	560*40*9.5
KDR-MG-760	7	DC12V	85	180	760*40*9.5
KDR-MG-860	8	DC12V	85	180	860*40*9.5
KDR-MG-960	9	DC12V	85	180	960*40*9.5



门碰感应