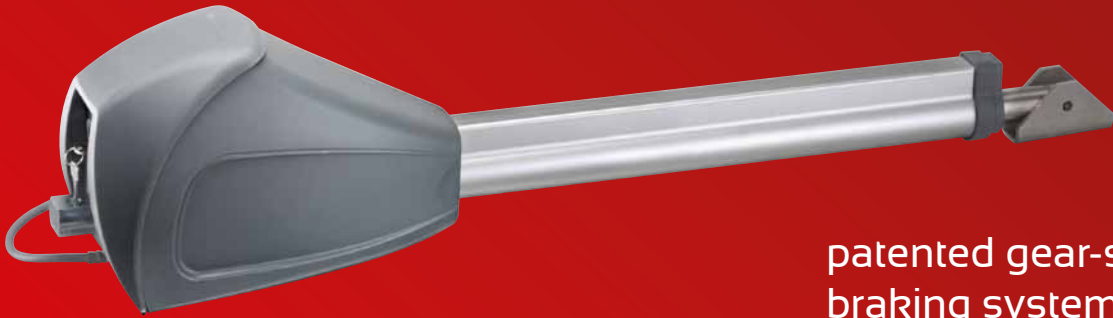




The strong swing gate operator for gates up to 5 m width per leaf

Dynamic Power
System (DPS)

maintenance-free
with a long service life



patented gear-saving
braking system

robust construction





The strong swing gate operator for gates up to 5 m width per leaf

Flexible:

- ▶ universally suitable for gates opening to the left and right
- ▶ 1- and 2-leaf operations possible as well as mixed operations with twist 200 E/EL* and twist 350
- ▶ also applicable for closed gate fillings
- ▶ also for gates which open to the outside
- ▶ microprocessor control board with a range of setting options, such as pedestrian door function, automatic closing of gate, adjustable early warning time, adjustable functions when obstacle is encountered while door is closing (either total or partial gate reversal)
- ▶ interface for TorMinal programming device
- ▶ quick installation and easy electrical connection
- ▶ optimum adjustment for each gate

Secure:

- ▶ self-locking without any electrical lock (up to 5 m)
- ▶ automatic power deactivation ensures more security
- ▶ connections for safety facilities such as warning light and 2-/4-wire light barrier (photo cell), as well as for an external consumer (DC 24 V), floating relay output
- ▶ operator can be engaged and disengaged in any position (e.g. in case of power failure)

Innovative:

- ▶ motor and gears are protected by the patented SOMMER braking system from overload (up to 3 tons), e.g. wind loads or vandalism
- ▶ smooth travelling arm due to spring supported threaded spindle

Hint:

Just order for the operation of a 2-leaf gate installation with the twist XL:
2 x "twist XL" operator + the appropriate control unit

Last updated: 01/2013. Literal errors, errors and technical changes excepted.

* Note: twist 200 E/EL operators and twist XL control units can only be operated in connection with the conversion kit "twist XS" (item no. 3248V000).

Technical data:

Max. weight per leaf	500 kg
Max. traction and pressure force:	4,500 N
Travel length (per leaf):	450 mm
Power supply:	AC 220 ... 240 V
Nominal frequency:	50 Hz
Temperature range:	-20°C / +70°C
Protection class (operator):	IP 44
Protection class (control unit):	IP 65 / IP 67

Included in delivery:

twist XL, 1-leaf
(item no. 3280V000)



twist XL control unit
(item no. 3282V000)



- ▶ control unit in housing (IP 65)
- ▶ pluggable radio receiver (FM 868.8 MHz)
- ▶ 4-command transmitter (item no. 4020)



twist XXL control unit
(item no. 3300V000)



- ▶ control unit in large housing (IP 67) with protection against contact and already pre-installed main switch
- ▶ pluggable radio receiver (FM 868.8 MHz)
- ▶ 4-command transmitter (item no. 4020)



Did you know?

SOMMER offers you the proper bracket for almost every kind of installation. We cover most fields of application, from "hot-dip galvanised" and "stainless steel" to brackets for inclining gates. In the event where we still don't have the one you need we will work with you to find the perfect solution.



Visit our homepage: www.sommer.eu

SOMMER Antriebs- und Funktechnik GmbH
 Hans-Boeckler-Str. 21 - 27 • D-73230 Kirchheim/Teck
 phone: +49 (0) 70 21 / 80 01-0
 fax: +49 (0) 70 21 / 80 01-101
 e-mail: info@sommer.eu