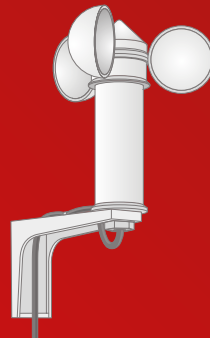
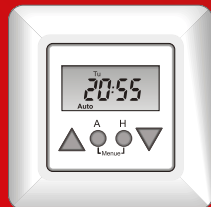


The world of **SOMMER** roller shutter /awning drives



SOMMER's roller shutter and awning

Product benefits

SOMMER tubular motors are suited for retro-fitting to most existing roller shutters, awnings and also new builds:

- ▶ It is **very convenient** to open or close the roller shutter or awning – by pressing a button automatically – no need to open manually.
- ▶ The **mechanical parts of the roller shutter and awning are smooth** due to the steady movements of the motor.
- ▶ The controls and numerous accessories available such as the sun/wind sensor or radio receiver, allow **even more possibilities**:
Your roller shutter closes automatically with activation of the sun sensor and your bedroom stays cool in the summer. With installed timing the roller shutters can be opened and closed automatically to a fixed time or randomly which gives the impression that your home is occupied. This gives **a high level of security against unwanted intruders**.

Reliable technology

Our roller shutter and awning drives have stood the test of time due to the efficient, well-developed technology. Some of the substantial advantages:

- ▶ durable and robust drive
- ▶ safe against voltage fluctuation
- ▶ smooth running motor
- ▶ quick installation and easy limit switch adjustments



Decreasing heating costs

In times of increased prices an **efficient energy use** is more important than ever. The tubular motors in combination with a control help you to reduce heating costs. By closing your rolling shutters on time you can **reduce the need of heating energy by up to 10 percent** and avoid cold air coming in through glass areas and unsealed windows where warmth can disappear.

When your home is unoccupied, the tubular motor controls with integrated timer and astro function is working for you. The "ContRoll Astro" control adjusts the opening and closing time automatically by adjusting to climate conditions.

drives: at a glance



The SOMMER guarantee

At SOMMER you have **5 years guarantee** on all roller shutter and awning drives and brackets, as well as a 2 year part guarantee on the controls.*

* from SOMMER invoice date; excluding batteries, radio receivers and hand transmitters.
For further information see the main catalogue or visit www.sommer.eu

Certified quality

Our roller shutter and awning drives are tested and certified in accordance with strict guidelines. That means you can be sure that our products are of the highest quality.

- ▶ SOMMER is certified according to **DIN EN ISO 9001**. This guarantees you the highest standards of quality and production.
- ▶ Our roller shutter and awning drives comply with the applicable European provisions (**CE mark**).
- ▶ Our tubular motors are also **tested by independent test institutes** and the safety validated according to statutory provisions and standards.



The SOMMER roller shutter and awning

Tubular motor range

Your advantage:

- ▶ durable and robust drive
- ▶ quick, fast installation, also retrofitting is possible
- ▶ smooth motor
- ▶ the mechanical parts of roller shutters and awnings are smooth running due to the steady movements of the motor



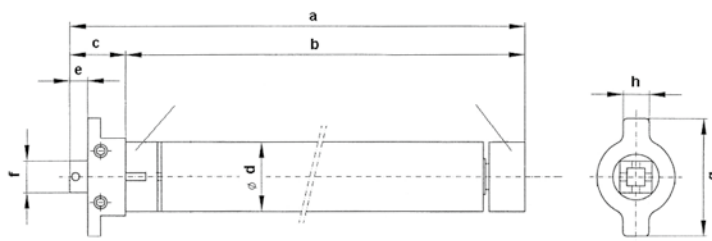
Technology:

The SOMMER tubular motors have mechanical limit switches which are also suitable for awnings.

Scope of delivery:

- ▶ tubular motor incl. 2.0 m cable
- ▶ adapter set
- ▶ cranked wall anchor
- ▶ adjusting tool
- ▶ installation and operating instructions

[mm]	a	b	c	d	e	f	g	h
A 10/40	520	490	30	35	14	10x10	70	20
A 10/60	487	450	37	45	14	10x10	70	20
A 20/60	487	450	37	45	14	10x10	70	20
A 30/60	557	520	37	45	14	10x10	70	20
A 40/60	557	520	37	45	14	10x10	70	20
A 50/60	557	520	37	45	14	10x10	70	20



All blinds or awnings can be controlled via radio by request.

Our tubular motor at a glance:

	A 10/40	A 10/60	A 20/60	A 30/60	A 40/60	A 50/60
Item no. ¹⁾	3940V000	3950V000	3951V000	3952V000	3953V000	3954V000
Adapter set ¹⁾	8-kt., SW 40 mm	8-kt., SW 60 mm	8-kt., SW 60 mm	8-kt., SW 60 mm	8-kt., SW 60 mm	8-kt., SW 60 mm
Cranked wall anchor ¹⁾	Tkr. 48/60 mm	Tkr. 48/60 mm	Tkr. 48/60 mm	Tkr. 48/60 mm	Tkr. 48/60 mm	Tkr. 48/60 mm
Drive:						
Torque max. [Nm]	10	10	20	30	40	50
Speed [1/min.]	17	15	15	15	15	12
Capacity of limit switch [U]	30	22	22	22	22	22
Dimensions:						
Diameter [mm]	35	45	45	45	45	45
Drive length [mm]	520	487	487	557	557	557
Depth of insertion [mm]	490	450	450	520	520	520
Required space of wall spindle [mm]	32	39	39	39	39	39
Length of connecting cable [m]	2	2	2	2	2	2
Connecting cable	4 x 0.75 mm ²	4 x 0.75 mm ²	4 x 0.75 mm ²	4 x 0.75 mm ²	4 x 0.75 mm ²	4 x 0.75 mm ²
Connected load:						
Voltage [V]	AC 230 V	AC 230 V	AC 230 V	AC 230 V	AC 230 V	AC 230 V
Frequency [Hz]	50	50	50	50	50	50
Nominal current consumption [A]	0.55	0.5	0.7	0.8	0.9	0.9
Power [W]	125	120	160	185	210	210
Allowed operating mode	4 min.	4 min.	4 min.	4 min.	4 min.	4 min.
Protection class	IP44	IP44	IP44	IP44	IP44	IP44

1) The adapter set and the wall bracket are included in the scope of delivery.

8-kt. = octagonal / Tkr = load capacity / SW = width across flats



How to find the right tubular motor:

Tubular motors for roller shutters

Roller shutter shaft	Drive	Item no.	Required accessory	Torque [Nm]	Weight [kg]	max. roller shutter surface		
						PVC [m ²]	Aluminium [m ²]	Wood [m ²]
40 mm octagonal	A 10/40	3940V000	-	10	25	5.5	4.2	-
60 mm octagonal	A 10/60	3950V000	-	10	20	4.4	3.3	-
	A 20/60	3951V000	-	20	40	8.8	6.7	-
	A 30/60	3952V000	-	30	55	12.2	9.2	5.5
	A 40/60	3953V000	-	40	70	15.5	11.7	7.0
	A 50/60	3954V000	-	50	90	20.0	15.0	9.0
70 mm octagonal	A 30/60	3952V000	5902V000	30	50	11.1	8.0	5.0
	A 40/60	3953V000	5902V000	40	60	13.3	10.0	6.0
	A 50/60	3954V000	5902V000	50	75	16.7	12.5	7.5

Tubular motor weight		
PVC	approx. 3.5 – 5.0 kg/m ²	(calculation basis 4.5 kg/m ²)
Aluminium	approx. 5.0 – 7.0 kg/m ²	(calculation basis 6.0 kg/m ²)
Wood	approx. 10 kg/m ²	(calculation basis 10 kg/m ²)

Tubular motors for awnings

Awning cloth	Drive	Item no.	Required accessory	Torque [Nm]	Number of articulated arms	Spring force [N]	Torque requirement [Nm]
63 mm notch tube	A 20/60	3951V000	5908V000	20	2	500	18
	A 30/60	3952V000	5908V000	30	3	750	26
	A 40/60	3953V000	5908V000	40	4	1000	35
	A 50/60	3954V000	5908V000	50	5	1250	44
70 mm notch tube	A 20/60	3951V000	5906V000	20	2	500	20
	A 30/60	3952V000	5906V000	30	3	750	30
	A 40/60	3953V000	5906V000	40	4	1000	40
	A 50/60	3954V000	5906V000	50	5	1250	50
73 mm notch tube	A 30/60	3952V000	5903V000	30	2	500	23
	A 40/60	3953V000	5903V000	40	3	750	34
	A 50/60	3954V000	5903V000	50	4	1000	45
78 mm notch tube	A 40/60	3953V000	5909V000	40	3	750	36
	A 50/60	3954V000	5909V000	50	4	1000	48

Awning springs		
Power / arm	approx. 20 – 30 kg	(calculation basis 25 kg/Arm)

The appropriate accessories

Standard accessory:



Wall anchor (cranked)

- for tubular motors A10/40, A10/60 to A50/60
- load capacity 48/60 mm



Adapter for octagonal tube, diameter 40

- suitable for tubular motor A10/40



Adapter for octagonal tube, diameter 60

- suitable for tubular motor X/60

(The drive comes complete with the above accessories.)

Adapter accessory for tubular motors X/60:



Adapter for octagonal tube, diameter 50

item no. 5900V000



Adapter for round tube, diameter 50

item no. 5907V000



Adapter for notch tube, diameter 63

item no. 5908V000



Adapter for octagonal tube, diameter 70

item no. 5902V000



Adapter for profile tube, diameter 70

item no. 5901V000



Adapter for notch tube, diameter 70

item no. 5906V000



Adapter for notch tube, diameter 78

item no. 5903V000



Adapter for notch tube, diameter 85

item no. 5909V000

The appropriate accessories for your

Wall anchor accessory:



Wall anchor item no. 5904V000

- suitable for tubular motors A10/40 to A50/60
- in case of re-decoration with existing plaster bearing



Wall anchor item no. 5905V000

- suitable for tubular motors A10/40 to A50/60
- for newly built boxes



Wall anchor item no. 5933V000

- suitable for tubular motors A10/40 to A50/60
- with spring cotter pin
- suitable for porch and construction elements



Universal wall anchor item no. 5935V000

- suitable for tubular motors A10/40 to A50/60
- for renovation work and newly built boxes
- simplified installation due to more flexible and more time-saving adjustment of shaft
- unlatchable

The **SOMMER** controls for awnings – the weather always in view:



ContRoll Sun

item no. 6006V000

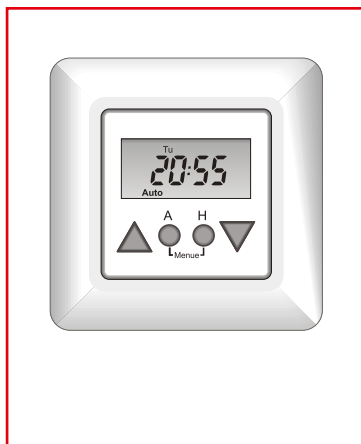
incl. sun and wind sensor

- operation by hand or automatically adjustable (wind automatic is always active)
- status display via two-coloured LEDs
- limit values for wind and sun individually adjustable
- colour: signal white (similar to RAL 9016)
- incl. frame cover for single installation

roller shutter and awning drive

Opulence at the touch of a button – for your roller shutters and blinds:

It does not matter if the blind closes in strong sunlight or if the roller shutter closes automatically in the evening, by using the controls almost all products can be automated.

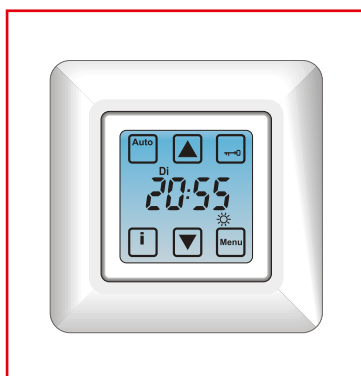


ContRoll Astro

item no. 6008V000

Roller shutter timer with astro programme

- operation by hand or automatically adjustable
- date and time factory pre-set
- week function and open/close time individually programmed for every weekday
- astro function and open/close according to the current sun rise and sun set times
- variable settings for automatic timing
- data memory in case of power failure
- automatic clock change (summer/winter)
- sun function, sun sensor connectable (item no. 6010V000)
- colour: signal white (similar to RAL 9016)
- incl. frame cover for single installation

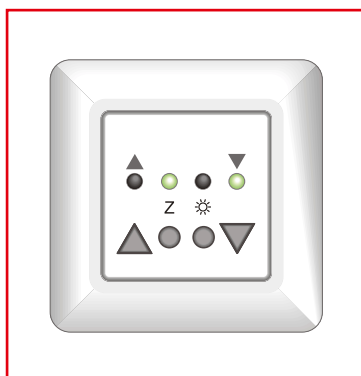


ContRoll Touch

item no. 6009V000

Roller shutter timer with all advantages of "ContRoll Astro" and additionally:

- with blue-lighted touch screen display
- with main input to connect paramount control devices
- twilight function in combination with the sun sensor (item no. 6010V000)
- colour: signal white (similar to RAL 9016)
- incl. frame cover for single installation

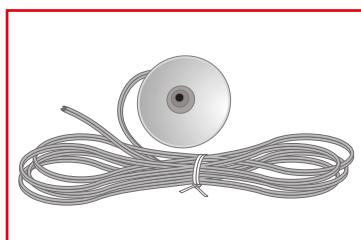


ContRoll Shutter

item no. 6007V000

Motor control device for a roller shutter operator

- compared to the roller shutter switch, this control offers more functions and combination possibilities (*control examples see page 11*)
- operation by hand or automatically adjustable through a central control
- 3-wire central input
- separate connection for central signal forwarding
- sun function, sun sensor connectable (item no. 6010V000)
- colour: signal white (similar to RAL 9016)
- incl. frame cover for single installation



Sun sensor

item no. 6010V000

- suitable for ContRoll Astro/Touch/Shutter controls
- for fixing inside a window
- incl. 2 m cable (*further cable length on request*)
- colour: white

The appropriate accessories

Cut-off relay

item no. 6005V000

- for grouping of two tubular motors on the same control or on a bolted blind switch
- connections for a bolted blind switch to single handle the connected motors
- installation e.g. in a flush-mounted socket with diameter 55 with deep mating plug



Blind switch surface mounted flush mounted

item no. 5972
item no. 5973

- stay put
- white housing
- connections for tubular motors A10/40 to A50/60



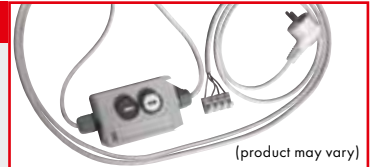
item no. 5972

item no. 5973

Adjustable cable for tubular motors

item no. 5930

- installation support for the initial operation and the adjustment of the limit switches
- is required, if no switch or controls are installed yet



(product may vary)

Everything for a convenient control via **SOMMER** radio:

FunkManager S (IP30)

item no. 5980V000

- radio control of shutters, blinds and awnings
- with integrated radio receiver (FM 868.8 MHz) for 112 programmable radio codes
- flush-mounting with connection cable
- fits into all customary-in-trade socket (55 mm)
- programmable via radio
- relay output (3 A, 50/60 Hz)



3-button wireless switch

button top in white
button top in anthracite

item no. 4762V000
item no. 4762V001

- up to three applications possible (up/stop/down)
- for universal use
- surface mounting with screws or double-sided adhesive tape



4-command transmitter

item no. 4020V000

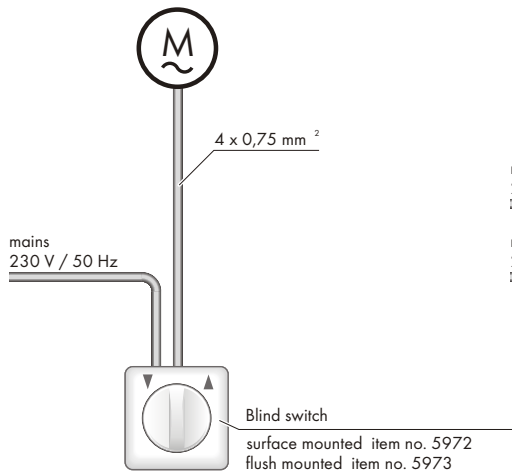
- transmitter to control roller shutters and awnings
- up to four applications possible
- modern, elegant design in stainless steel
- slider keypad cover prevents unintentional activity
- dust-proof housing



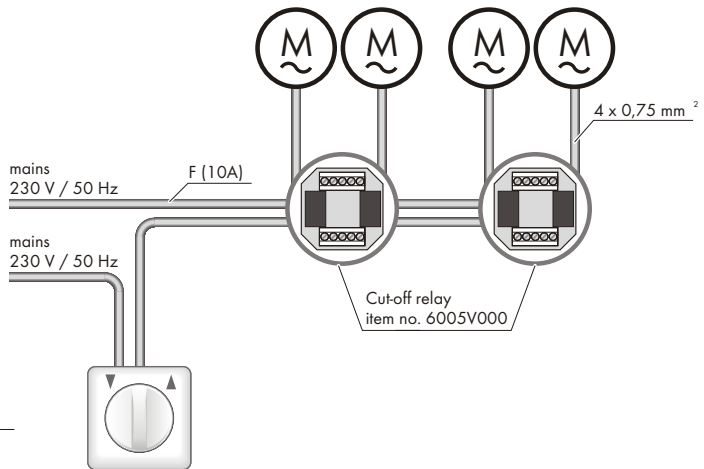
Even more transmitters and radio accessories are in the main catalogue or in the internet: www.sommer.eu

Control examples

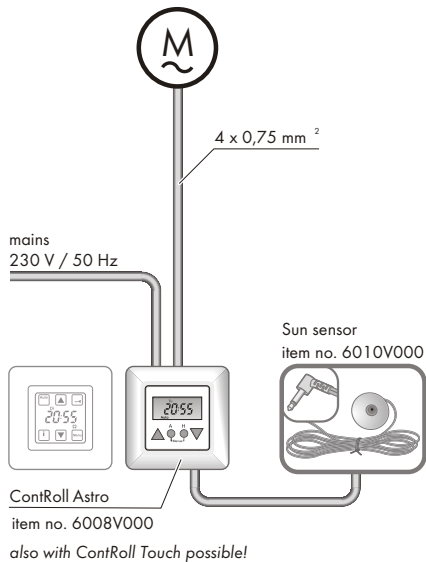
Example no. 1: control of single motor



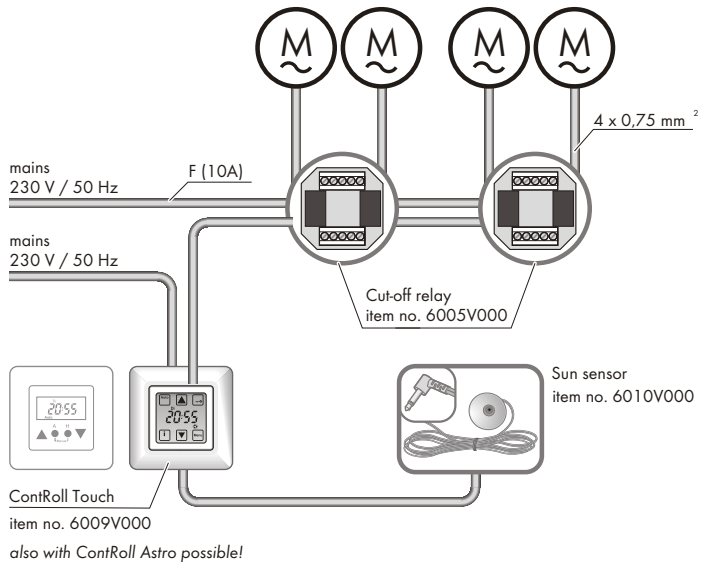
Example no. 2: two or more motors controlled by one switch



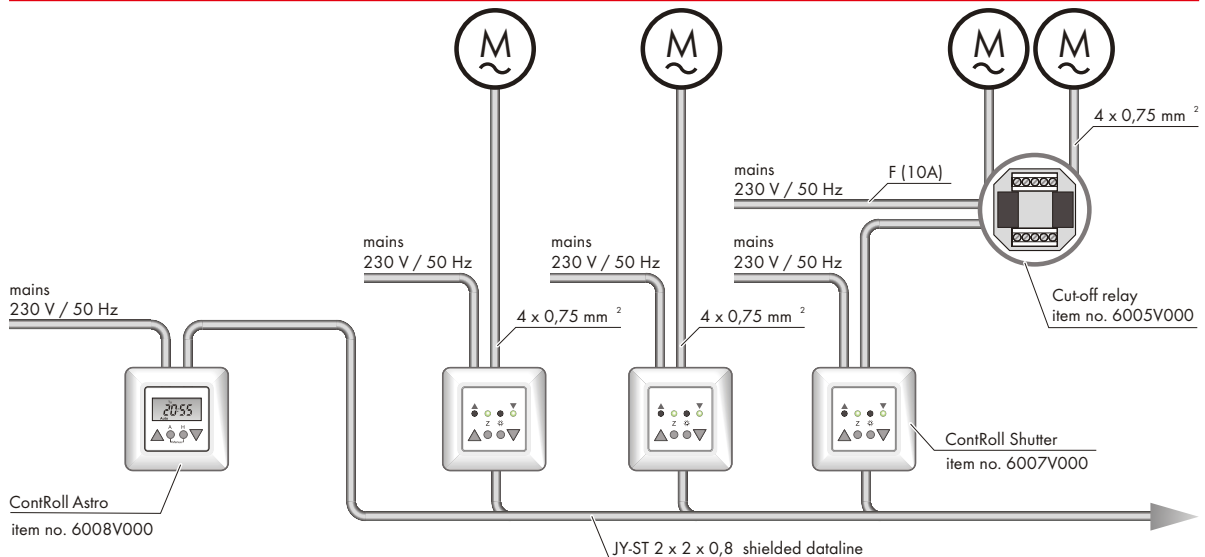
Example no. 3: time / sun control of single motor



Example no. 4: two or more motors controlled by one timer



Example no. 5: group / single control with timer



[All information is subject to change. Further information are in the installation and operating instructions.]

We are always certain to have the ideal solution.

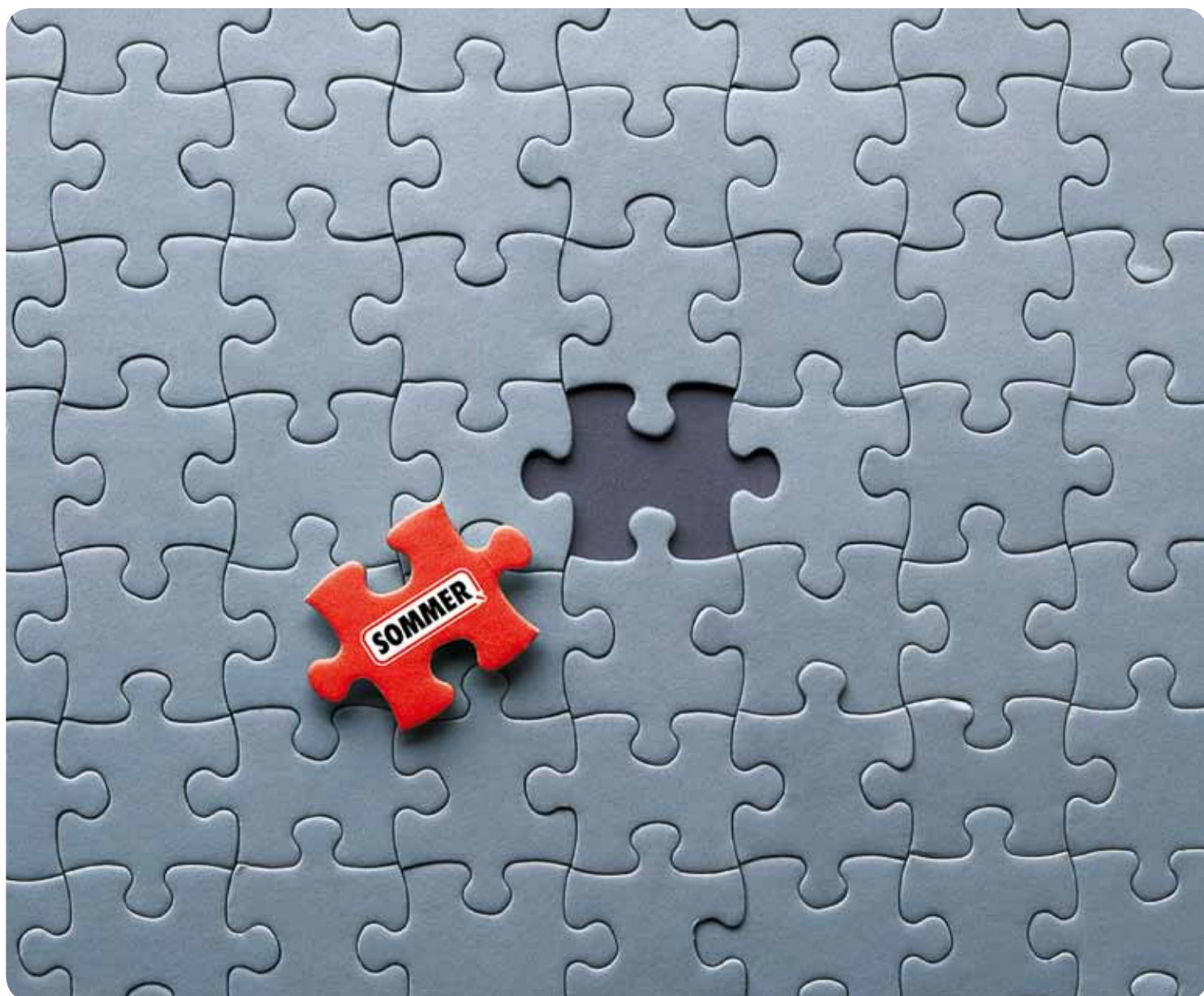
The **SOMMER** company together with their subsidiaries and partners worldwide offer you everything from one source. Our products stand for highest quality and innovative technology – made by **SOMMER**.

*Garage door operators
Roller shutter operators
Parking and blocking systems*

*Swing gate operators
Awning operators
Aluminium front doors*

*Sliding gate operators
Integrated operator systems
Home Automation*

*Industrial door operators
Roller door control unit
Radio control systems*



© 45028V001-0813-0. Literal errors, errors and technical changes excepted.

SOMMER

Visit our homepage: www.sommer.eu

SOMMER Antriebs- und Funktechnik GmbH
Hans-Boeckler-Str. 21 - 27
73230 Kirchheim/Teck (Germany)
phone: +49 (0) 70 21 / 80 01-0
fax: +49 (0) 70 21 / 80 01-101
e-mail: info@sommer.eu

Your SOMMER dealer: