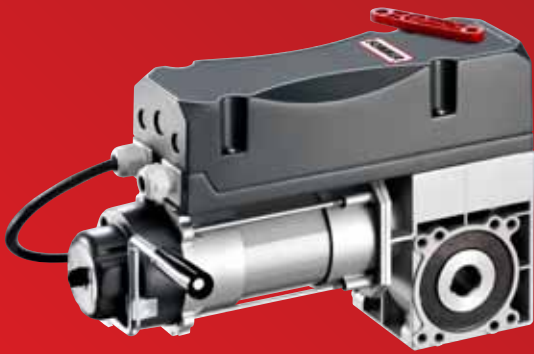


# The world of **SOMMER** industrial door operators



GIGAntic

NEW



Revolutionary



# GIGA the new industrial door operators

## SOMMER is setting new standards!

### High performance and flexibility

These days' industrial door operators need to be tailored to the needs and processes of companies. They have to be durable, efficient and quick to open and close. The new **GIGA** industrial door range from SOMMER combines all these characteristics into one product.

#### Highest level of flexibility

Our new easy to program operator is designed with every single type of application requirement in mind.

#### Absolute reliability

SOMMER's reliable and proven industrial door gearing technology ensures a long life cycle.

#### Customer-specific commissioning

Numerous possible combinations and a revolutionary control technology combined with multiple accessory inputs cater fully for the industrial door market.

#### Efficient performance

**GIGA** operator units ensure smooth operation with optimal power from 230V / 400V supply even under high loads.

#### First class, user friendly and helpful

The user friendly yet sophisticated operator technology ensures the highest customer satisfaction.

#### SOMMER guarantee

With SOMMER you get a 5 year guarantee<sup>1)</sup> on all industrial door operators.

Tested according  
to EN 13241-1



	GIGA <sub>sedo</sub>		GIGA <sub>roll</sub>		GIGA <sub>speed</sub>
	With frequency converter	Without frequency converter	With frequency converter	Without frequency converter	With frequency converter
Automatic controlling	☑	☑	☑ <sup>2)</sup>	☑	☑
Dead man's switch	☑	☑	—	—	—
Emergency release	☑	☑	—	—	—
Emergency hand chain	☑	☑	☑ <sup>2)</sup>	☑	—
Emergency hand crank	☑	☑	☑ <sup>2)</sup>	☑	☑
Output torque Nm	100 Nm + 140 Nm		Various operator systems 140 - 1400 Nm		35 - 200 Nm
	Page 4 - 5		Page 6		Page 7

<sup>1)</sup> from SOMMER invoice date; excluding radio receivers and transmitters. For further information see the main catalogue or visit [www.sommer.eu](http://www.sommer.eu)

<sup>2)</sup> is in the planning stages



# GIGAcontrol

## A controller for all requirements

Whether it's a sectional, roller or high-speed door operator, with or without frequency converter, **GIGAcontrol** is the solution.

The **GIGAcontrol** deals with any application and requirement.

All programming is done from the outside using the buttons on the front of the control box. The 5 row clear display with its user friendly menu makes programming easy.

The unit automatically detects changes in rotation direction and has automatic overrun correction. We have also made it simple to connect and set a frequency converter as well as designed the unit to automatically detect and assign safety devices and identify contra flow modules. These are just a few of the features SOMMER brings to the market with the new **GIGAcontrol**.

Secure operation is ensured by three password-protected operating levels for administrators, installers and operators.

Service and error reports are shown on the large clear-text display, which can also be backlit upon request, ensuring optimal operation of the door system.

The elegant casing in IP 54/65 design with ample installation space and cable tunneling is the result of intensive development efforts. SOMMER is also applying new emphases here.



# GIGAsedo 24.10DI

## Sectional door operator with emergency release and integrated dead man's switch

Our **GIGAsedo** 24.10DI was specially developed for doors with low requirements specification.

Smooth operation and durability are the principle features of this powerful operator from SOMMER.

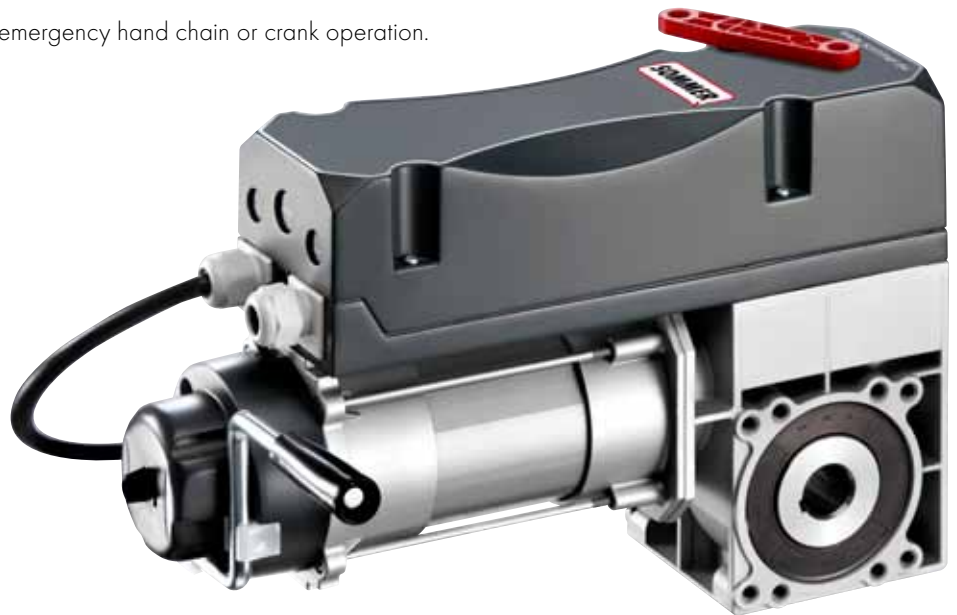
The standard electronic limit switch system can be set using the controller integrated into the operator by means of any conventional triplex sensing device. The innovative controlling technology means no logic is required in the sensing device. The door can either be moved by a dead man's switch or by impulse operation/AUF.

The one-piece gear housing made of die-cast aluminum is fitted with special bronze worm wheels. The life-long lubrication is achieved by using a specially selected lubricant. The electric motor ensures long life and a low vibration and noise operation in all assembly positions.

The **GIGAsedo** 24.10DI can be produced upon request with hollow shafts of 25.4 or 31.75 mm.

This operator is of course also available with emergency hand chain or crank operation.

Technical data	
Output torque	100 Nm
Output speed	24 rpm
Motor performance	0.37 kW
Operating voltage	1 x AC 230/400 V
Frequency	50 Hz
Controlling voltage	24 V
Motor duty cycle	S3-60 %
Building fuse	10 Amps (inert)
Protection type	IP54
Weight (approx.)	12.4 Kg
Limit switch range	15 / 30



# GIGAsedo 18.14H-F

## Sectional door operator with integrated frequency converter and emergency hand crank operation

The **GIGAsedo** 18.14H-F is the perfect solution for large sectional doors and for door systems that must be operated with AC power. The frequency converter mounted to the operator can be easily adjusted using the **GIGAcontrol** automatic controller.

Our revolutionary concept enables the installer to put the operator into operation with just a few programming steps, and all using just the controller keypad. The **GIGAcontrol** can also easily be supplemented with a radio control, loop detector or counterflow controller.

The motor and gears are perfectly attuned to one another, ensuring lasting, reliable operation.

The **GIGAsedo** 18.14H-F can be fitted with an emergency hand crank, hand chain or release ex works upon request.

Technical data	
Output torque	140 Nm
Output speed	18 rpm
Motor performance	0.55 kW
Operating voltage	1 x AC 230 V
Frequency	50 Hz
Controlling voltage	24 V
Motor duty cycle	S3-60 %
Building fuse	10 Amps (inert)
Protection type	IP54
Weight (approx.)	12.4 Kg
Limit switch range	15 / 30
Frequency converter	0.75 kW



# GIGAsedo 24.10

Sectional door operator with emergency release (D), hand chain (C) or crank (H).

GIGAsedo 24.10 – the alternative for spring balanced sectional doors.

Smooth operation, power and durability are the hallmarks of this operator from SOMMER.

The one-piece gear housing made of die-cast aluminum is fitted with special bronze worm wheels. The life-long lubrication is achieved by using a specially selected lubricant. The electric motor ensures long life and a low vibration and noise operation in all assembly positions.

Combined with the revolutionary controlling technology, the GIGAcontrol control presented by SOMMER has an operator system that meets all requirements.

With installation, user and service friendliness, SOMMER is opening up the industrial door market to new alternatives and possibilities.

The 24.10 can be produced upon request with hollow shafts of 25.4 or 31.75 mm.

Technical data	
Output torque	100 Nm
Output speed	24 rpm
Motor performance	0.37 kW
Operating voltage	3 x AC 230/400 V
Frequency	50 Hz
Controlling voltage	24 V
Motor duty cycle	S3-60 %
Building fuse	10 Amps (inert)
Protection type	IP54
Weight (approx.)	12.8 Kg
Limit switch range	15 / 30





## GIGArroll 14.45C

### Operator system for roller doors – versatile, powerful and dynamic

The **GIGArroll** roller door operator range has a powerful gearing system that is combined with the latest in motor technology.

From 140 to 1400 Nm, we provide the market with a complete operator range for any size of roller door. Precisely manufactured worm wheels, integrated safety gear and efficient electric motors: the requirements of the market are perfectly met to the usual high standard of SOMMER quality.

Chain or crank, various rpms and also the standard electronic limit switch are made to match customer requirements.

Also here, the universal **GIGAcontrol**.

Technical data	
Output torque	450 Nm
Output speed	14 rpm
Motor performance	1.5 kW
Operating voltage	3 x AC 230/400 V
Frequency	50 Hz
Controlling voltage	24 V
Motor duty cycle	S3-60 %
Building fuse	10 Amps (inert)
Protection type	IP54
Limit switch range	10 / 20







## GIGAspeed 120.35H

### Operator system for high-speed foil doors

Optimal efficiency in a compact design for smaller high-speed doors.

With 120 rpm at 35 Nm and an integrated frequency converter, the operator system has what it takes to meet customer requirements in the rapidly growing PVC high-speed door market. This system provides flexible application options either with or without a safety gear.

The frequency converter can be set easily in just a few programming steps using the **GIGA**control supplied.

Although this system is also supplied with an electronic limit switch as standard, SOMMER recommends the emergency crank design.

The **GIGAspeed** 120.35H can be manufactured upon request with a hollow shaft of 25 - 25.4 or 30 mm. Other rpms and tractive powers are also available, of course.

Technical data	
Output torque	35 Nm
Output speed	120 rpm
Motor performance	0.55 kW
Operating voltage	1 x AC 230 V
Frequency	50 Hz
Controlling voltage	24 V
Motor duty cycle	S3-60 %
Building fuse	10 Amps (inert)
Protection type	IP54
Weight (approx.)	12.4 Kg
Limit switch range	15 / 30



# We are always certain to have the ideal solution.

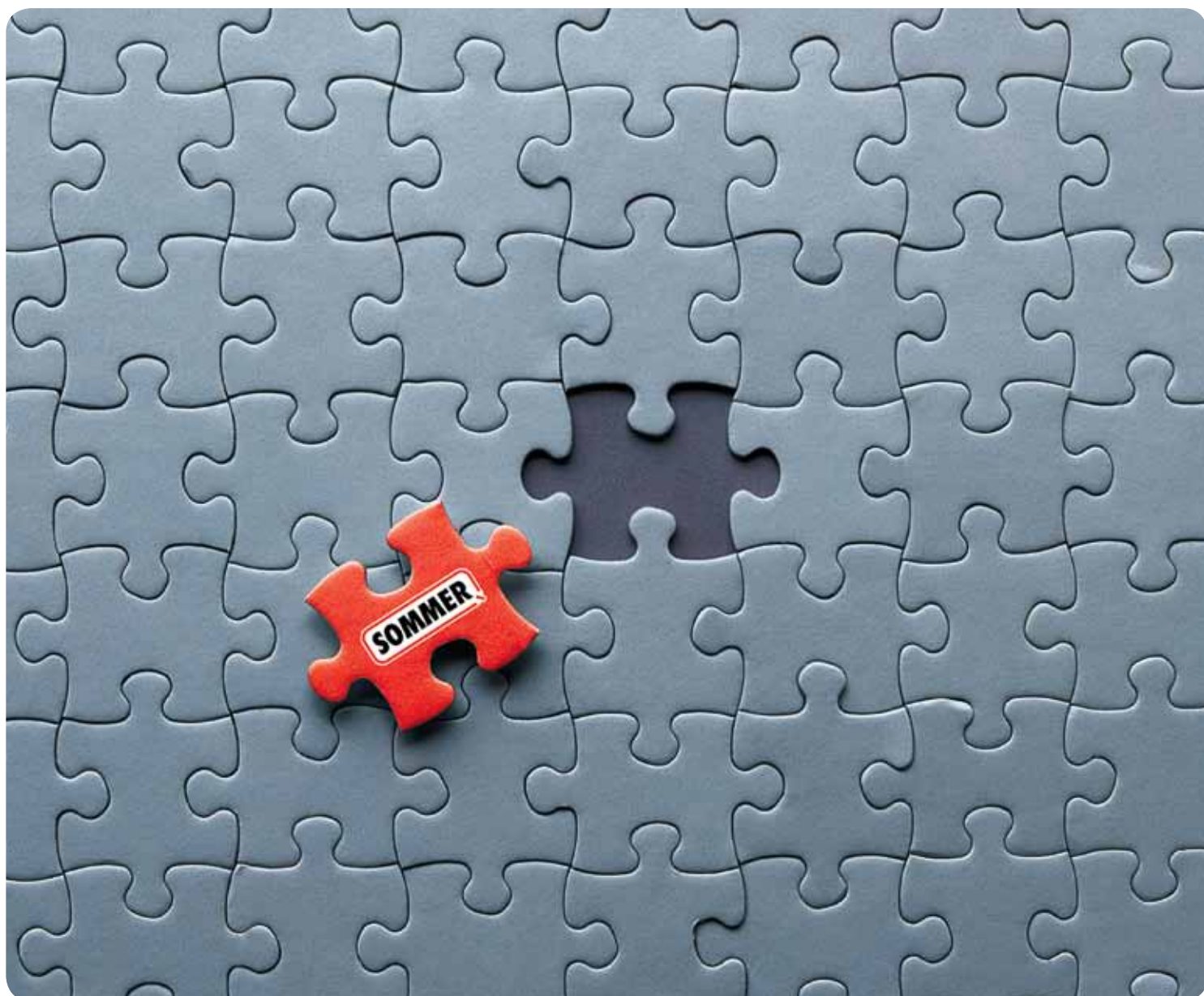
The **SOMMER** company together with their subsidiaries and partners worldwide offer you everything from one source. Our products stand for highest quality and innovative technology – **SOMMER** “Made in Germany”.

*Garage door operators  
Roller shutter operators  
Parking and blocking systems*

*Swing gate operators  
Awning operators  
Aluminum front doors*

*Sliding gate operators  
Integrated operator systems  
Home Automation*

*Industrial door operators  
Roller door control unit  
Radio control systems*



Visit our homepage: [www.SOMMER.eu](http://www.SOMMER.eu)

SOMMER Antriebs- und Funktechnik GmbH  
Hans-Boeckler-Str. 21 - 27  
73230 Kirchheim/Teck (Germany)  
phone: +49 (0) 70 21 / 80 01-0  
fax: +49 (0) 70 21 / 80 01-101  
e-mail: [info@SOMMER.eu](mailto:info@SOMMER.eu)

Your SOMMER dealer: