

# PLUS

**NEW** Standard programming logic for all control boards CT102, CT202, CT724, 14A with run inversion via software

Amperometric obstacle detection with run inversion

Standard or programmable slowdown in opening and closing

Pedestrian programmable automatic closing

OPEN-STOP-CLOSE inputs and PP - Pedestrian input

Safety edge 8,2K ohm NC - photo 1 and photo 2

Inputs and safety devices LED visualization

Flashing light output fixed or flashing

LED courtesy light output or spia open gate indicator

Programmable electrolock or power contact (5Amp)

Pressure control for hydraulic motors

3 digit display

Optional phototest

Optional test for safety edge

New plug-in radio receiver 4 channels RX4



CT202

CODE	DESCRIPTION
CT202	For two swing 230 Vac motors. With electric clutch option, connectors for receiver and slowdown. In box

TECHNICAL DATA		CT202
power	Vac / Hz	230 / 50
output accessories power	Vdc / mA	24 / 200
output accessories power	Vac / mA	24 / 230
electric lock	VA/ ac	15 / 12
gate open light	mA	55
working time	sec	adjustable
pause time	sec	0-900
protection degree	IP	54
operating temperature	° C	-20° + 55°
power	W	700+700

# ACCESSORIES

## GO 24/GO 230/GO 400

KEY AUTOMATION | CATALOGUE 2013

### COMMON ACCESSORIES



#### RX4

4 channels plug-in receiver, fix or rolling code. In box



#### RXI23

2 channels plug-in receiver, fix or rolling code



#### RXM23

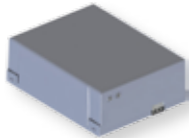
2 channels universal receiver external, fix or rolling code

### ACCESSORIES GO 24



#### BAT-12-2A (for CT-824S) (1pc)

Battery 12 V 2 A



#### KBP (for 14A)

Leaded battery back-up kit for 14A



#### KBPKN2 (for CT-724S)

Kit 24 Vdc batteries, 2,2 Ah and battery charger BCN, from 500 kg for extreme performance



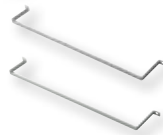
#### BOXKEY

Plastic box for two motors control unit



#### KBPKN (for CT- 724S)

Kit 24 Vdc batteries, 1,3 Ah and battery charger BCN. Up to 500 kg



#### KITFIXBATT

Kit fixing batteries 24 Vdc for **BOXKEY** (2 PCS)

### ACCESSORIES GO 230



#### BOXKEYS

Plastic box for one motor control unit

Control units

