

New generation control unit with LCD display

Soft start and soft stop function availability

Motor speed regulation and safety edge connection possibility

CT-724S, new self-programming control unit for 1 motor 24 Vdc

Provided with safety and LED command indication

Easy configuration with LCD display with 2 programming levels: basic and advanced one.

Flashing light, courtesy light and gate open light exit can be set up separately

Electronic protection to motor short-circuit, with rapid intervention

Electronic protection to overcharge

Overcharge protection

Self diagnosis through flashing light and display

New generation NI-MH batteries as optional on board (optional)



24 Vdc CONTROL UNITS



CT-824S



CT-724S*

CODE	DESCRIPTION
 CT-824S	For two motors, 24 Vdc switching with encoder, battery charger and connectors for receiver
 CT-724S*	For one sliding,overhead motor or barrier 24 Vdc, with encoder

* Included inside motors: SC4224- SC7224- SC11224- BR4-24KP- BR-624KP- BR4-24P- BR-624P- BS5224

TECHNICAL DATA		CT-824S	CT-724S
power	Vac / Hz	230 / 50	24 / 50
output accessories power	Vdc / mA	24 / 400	24 / 300
working time	sec	2-180	2-180
protection degree	IP	54	-
operating temperature	° C	-20° + 55°	-20° + 55°

ACCESSORIES

GO 24/GO 230/GO 400

COMMON ACCESSORIES



RX4

4 channels plug-in receiver, fix or rolling code. In box



RXI23

2 channels plug-in receiver, fix or rolling code



RXM23

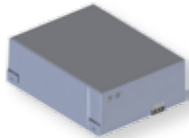
2 channels universal receiver external, fix or rolling code

ACCESSORIES GO 24



BAT-12-2A (for CT-824S) (1pc)

Battery 12 V 2 A



KBP (for 14A)

Leaded battery back-up kit for 14A



KBPKN2 (for CT-724S)

Kit 24 Vdc batteries, 2,2 Ah and battery charger BCN, from 500 kg for extreme performance



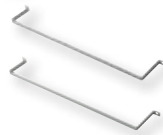
BOXKEY

Plastic box for two motors control unit



KBPKN (for CT- 724S)

Kit 24 Vdc batteries, 1,3 Ah and battery charger BCN. Up to 500 kg



KITFIXBATT

Kit fixing batteries 24 Vdc for **BOXKEY** (2 PCS)

ACCESSORIES GO 230



BOXKEYS

Plastic box for one motor control unit