



# GEWISS



*Domotics*



*EnergyDin*



*EnergyBloc*



*EnergyBox*



*Lighting*

## Products album

# The GEWISS world



GEWISS is an **international** leader in the production of systems and components for low voltage electrical installations.

The fact that development is seen as a constant management feature has permitted GEWISS to assert itself as a reference interlocutor, offering the market an integrated electrical system with over 20,000 products for **domotics, energy and lighting**.

**GEWISS**

“ Development as a constant feature of management ”



## Domotics

The domotics systems offer cutting-edge solutions for smart home and building management and control, guaranteeing safety, comfort and energy savings along with Italian design.



## EnergyDin

The technologically advanced range of modular and moulded-case devices joins the vast range of distribution boards and cabinets, enclosures and combined boards to create the GEWISS Protection System.



## EnergyBox

Special junction boxes and enclosures alongside a complete, co-ordinated line of enclosures and distribution boards. In addition, the GEWISS trunking systems are the element that combines the various system components.



## EnergyBloc

Avant-garde industrial connections for the wide variety of applications guaranteed, and an integrated system of distribution boards for special systems - both fixed and mobile - for electric, design and functional co-ordination.



## Lighting

The lighting solutions combine energy savings and visual comfort by offering products ideal for uses ranging from industry to street applications, from indoor and outdoor decoration to emergency lighting.

# The GEWISS world

## CHORUS domotic system

*Domotics*



## Domestic system



## Protection system

*EnergyDin*



## Connection systems

*EnergyBloc*



# Distribution system

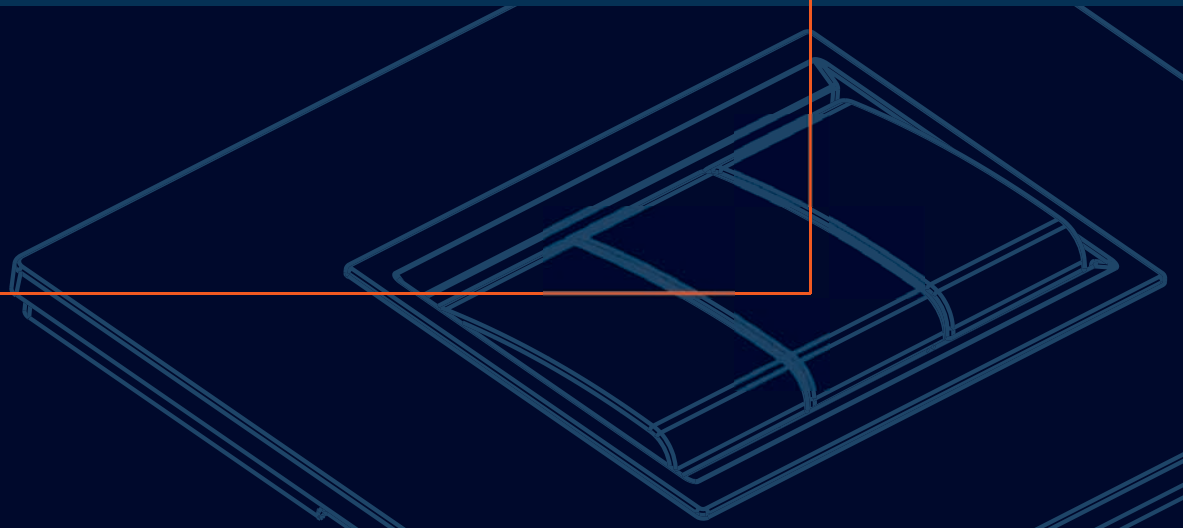
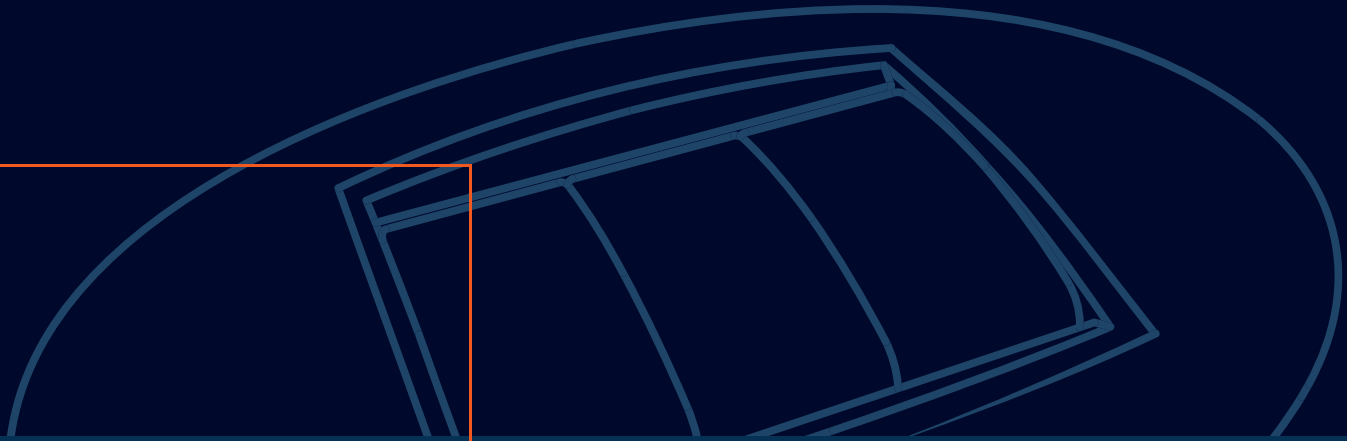
EnergyBox

# Lighting system

Lighting

46  Watertight surface-mounting distribution and automation boards	40 CD  Surface-mounting distribution boards and enclosures	40 CDI  Flush-mounting distribution boards and enclosures	44 CE  Technopolymer surface-mounting watertight junction boxes
GWConnect  Metal surface-mounting watertight junction boxes	48  Flush-mounting junction and modular range boxes	24 SC  Flush-mounting boxes for domestic ranges	42 RV  Surface- and flush-mounting watertight emergency enclosures
42 TV  Multifunctional supporting bases	44  Junction and connection terminal blocks	52 FS  Ties	74 PS  Push-buttons, selectors and indicators Ø 22mm
RK  Rigid protective conduit systems	50/52  Accessories for system assembly	FK  Pliable protective conduit systems	DF  Flexible protective conduit systems
FU AND PZ  Cable duct and electrical wells systems	NP 40  Mini trunking systems	NP 42  Trunking systems used as skirting and frame	NP 44/52  Systems of duct trunking and system device trunking in PVC
NP 54/55  Systems of duct trunking, system device trunking and columns in aluminium.	BFR  Steel wire cable trays	BRN  Sheet metal cable trays	SP  Fixing supports for cable trays

FLOODLIGHTS 	STREET LIGHTING 
INDUSTRIAL 	URBAN FURNISHINGS 
OUTDOORS 	INDOORS 
SIGNALLING 	EMERGENCY 





# Domotics



# INTERNATIONAL DOMOTIC SYSTEM

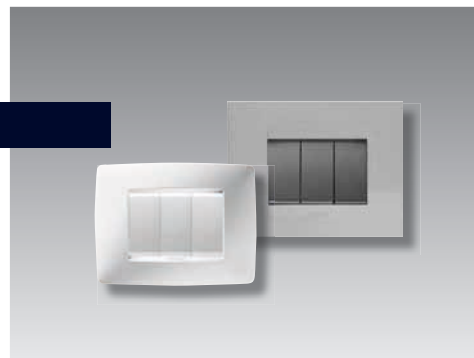
## The International Domotic System

The CHORUS international domotic system offers cutting edge solutions for home and building management and control, integrating the latest technology with the unmistakable shapes and lines of Italian design.



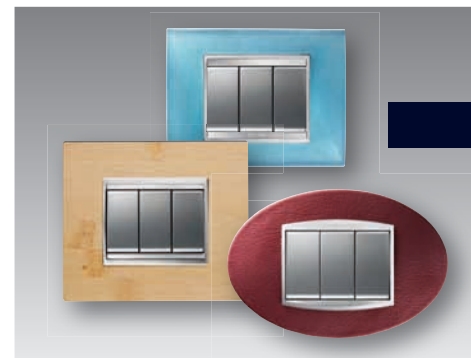
### ONE and GEO

ONE and GEO are characterised by their clean, classic style that is both discrete and rational. Made of technopolymer, they add something to every environment, giving the home a refined, delicate atmosphere.



### LUX, FLAT and ART

LUX, FLAT and ART give the home an elegant, original touch. Exclusive and refined, they blend with their surroundings thanks to their shape and materials (wood, leather, glass, technostone and metal).



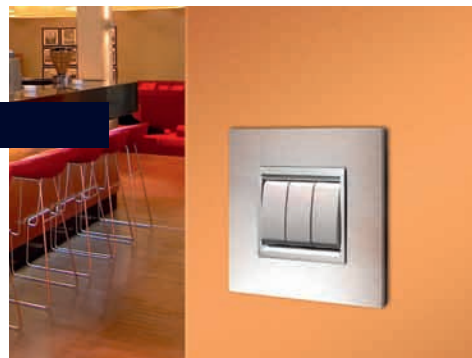
## ACTIVO

The ACTIVO enclosure, with its refined linear design, keeps the system's main operating parameters under control, along with consumption levels, any dispersion and sudden voltage changes. In the event of overloading, the system automatically excludes the line defined as non-priority, thereby avoiding a blackout.



## FLAT

The extraordinary dimensions of FLAT are surprising, transforming it into an element to adorn large spaces. The geometric rationality of the rectangular shape is highlighted by the light, refined lines.



## Modular devices

The possibility to combine keys from 1/2 module to 3 modules means the number of command points can be increased. The devices of 2 and 3 modules ensure easier activation and faster localisation.



# HOME AND BUILDING AUTOMATION

## KNX control panel

By sending commands and displaying status information, the control panel can interact with other devices connected to the KNX BUS. Thanks to the panel, it is possible to send the following commands: ON/OFF, timed activation, movement of roller shutters, light adjustment, storage and execution of scenes and priority commands.



## RF command and control

The CHORUS system devices with wireless communication allow the electric system to be integrated with new functions, eliminating the laying problems and speeding up installation.



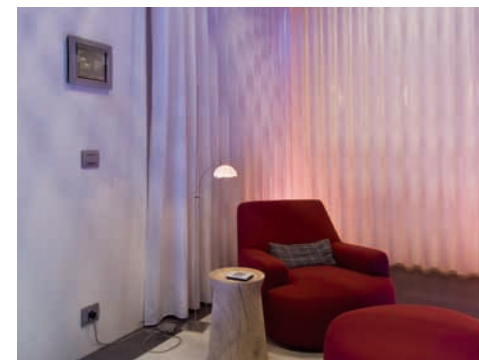
## RF burglar alarm

With personalised activation of the burglar alarm system via remote control, keyboard or transponder key, CHORUS allows the total activation or deactivation of the system, partial activations, and the activation of the anti-panic function.



## MASTER

MASTER offers the total control of the home, thanks to the KNX BUS connection; the device allows the home automation functions to be integrated with wireless commands, video surveillance systems, and burglar alarms. The touchscreen panel and intuitive graphic interface make home control easy, immediate and within everyone's reach.



## Digital Vision

The device is co-ordinated with the Lux plates and is available for flush-mounting and wall-mounting installations, allowing the display of the image coming from the front door unit and speakerphone communication.



## Internet Gateway

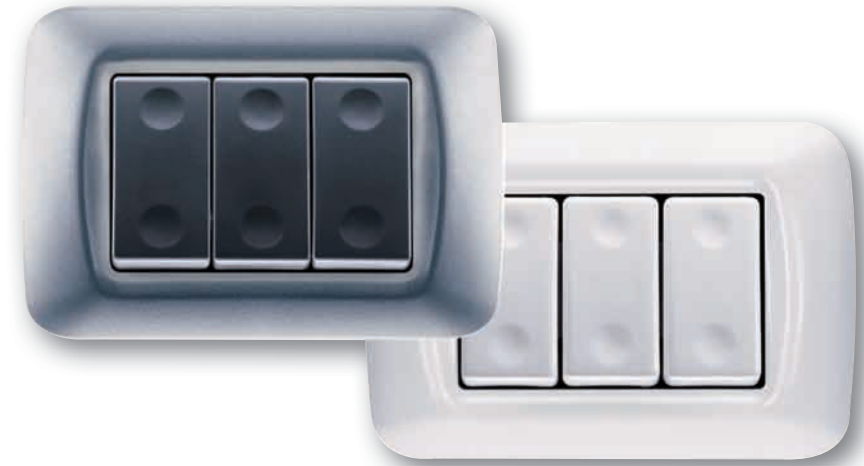
Any PC with a common browser and connected to Internet Gateway allows the control and supervision of the KNX domotic system, whether from remote (via the Internet) or via a local network (LAN).



# DOMESTIC RANGE AND STRUCTURED WIRING

## SYSTEM and SYSTEM RF

A universal system of modern plates divided into two ranges characterised by endless creative solutions and a vast range of products in a good 14 colours. The RF systems integrate perfectly with the conventional electric system, extending its functions without any need for masonry work.



## PLAYBUS

A modular range of high performance devices for domestic and similar uses; can be composed on frames for flush-mounting boxes of up to 18 modules. Available with satin black button key and plates with glossy or opaque finish.

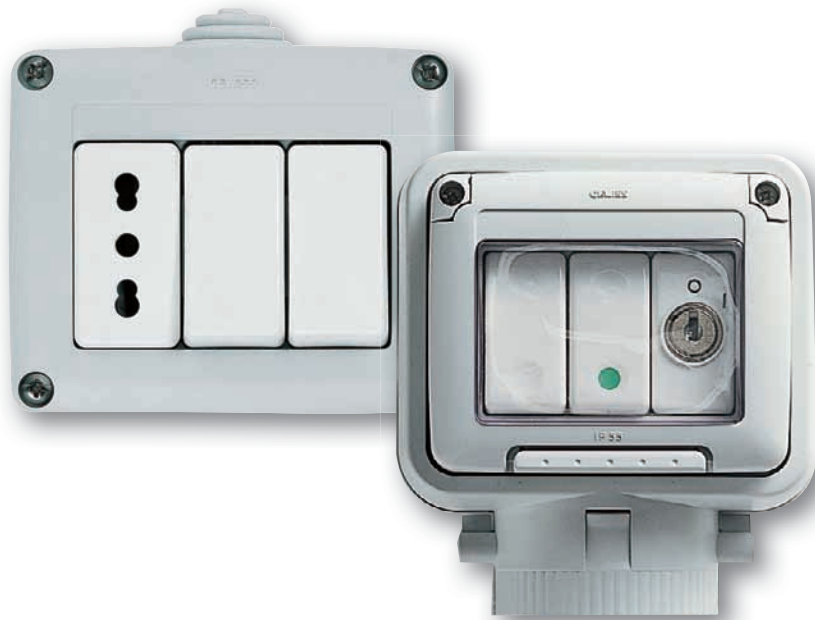


## Eco 60

Created for installation in round and square boxes, it is characterised by a strong, original design. A range allowing great flexibility of use, offering various and white components.



# DOMESTIC RANGE AND STRUCTURED WIRING



## 27 COMBI

A complete, versatile system of modular containers, perfectly integrable in the SYSTEM domestic range and able to meet the high protection installation requirements of the residential, commercial and industrial sectors. The 27 COMBI range - in the watertight version with an IP55 degree of protection - is recommended for all outdoor applications subjected to severe atmospheric conditions.



## 38 LAN

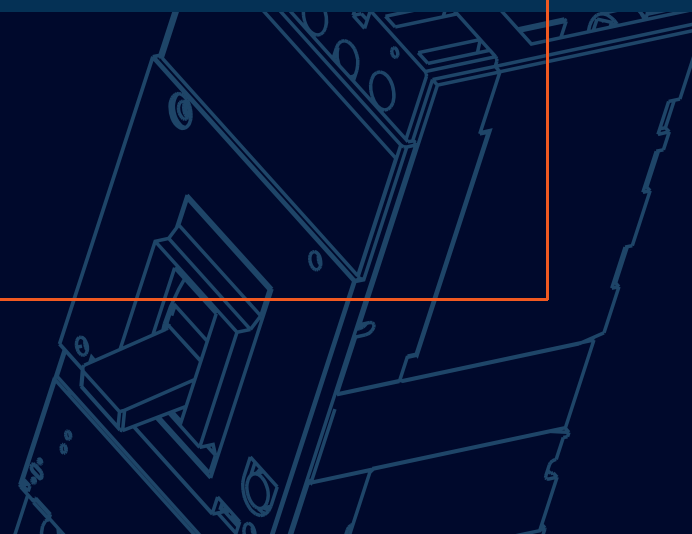
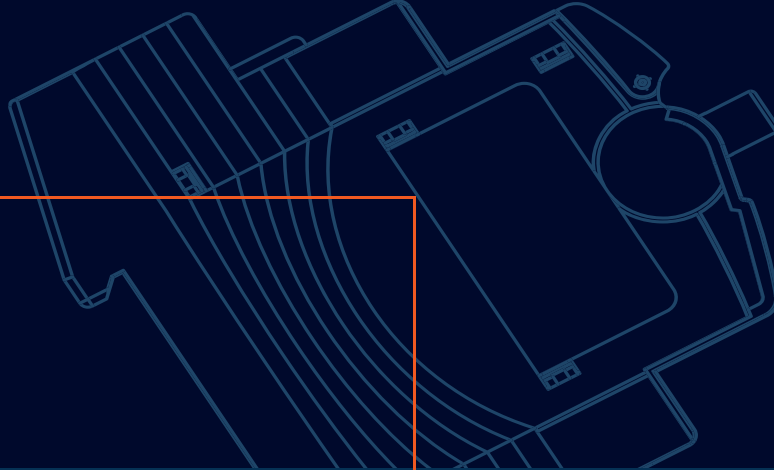
A complete, integrated range of products for the structured wiring of LAN networks. A solution allowing quick configuration and reduced installation times.



## 28 SPIC

Range of plugs, sockets, multiple adaptors and trailing socket-outlets for the most common power take-off needs in the domestic environment.







# EnergyDin



# MODULAR AND MOULDED-CASE DEVICES

## ReSTART

In the event of an automatic circuit breaker trips, the devices restore the power supply quickly, but only after checking the system status. In addition, the Autotest function periodically tests the functioning of the residual current circuit breaker protection without disconnecting the system from the power supply. The range includes 2-pole and 4-pole versions (also PRO and TOP for professional applications).



**ReSTART**  
**AUTOTEST**



## 90 RCD

The 90 RCD range includes the MDC monobloc compact residual current circuit breakers with overcurrent protection, the BD and BDHP add-on residual current devices for MT and MTHP miniature circuit breakers, and the SD residual current circuit breakers.



## 90 AM

The 90 AM range consists of auxiliaries for circuit breakers and many modular accessories for protection, control, programming, measurement and signalling in electric systems.



# MODULAR AND MOULDED-CASE DEVICES



## 90 MCB

The 90 MCB modular circuit protection devices offer a wide range of device to meet any overcurrent or short-circuiting protection requirement in all domestic, industrial and commercial applications. The range includes compact MTC, conventional MT and high performance MTHP miniature circuit breakers.



## MTX

The MTX range is the ideal solution for systems in the industrial and advanced commercial sectors, offering notable potential in terms of calibration and breaking capacity, a wide choice of accessories and integration with the 47 CVX boards.



## 97 MSS

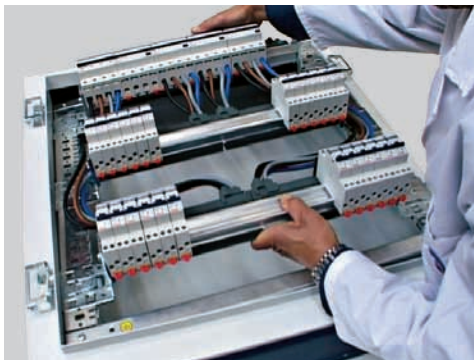
The MSS rotary switch disconnectors guarantee robustness and reliability for the command and insulation of circuits up to 630A (with 4 different sizes, depending on the current). Can be integrated with the boards of the 47 CVX and 46 ranges.



# DISTRIBUTION BOARDS AND ENCLOSURES

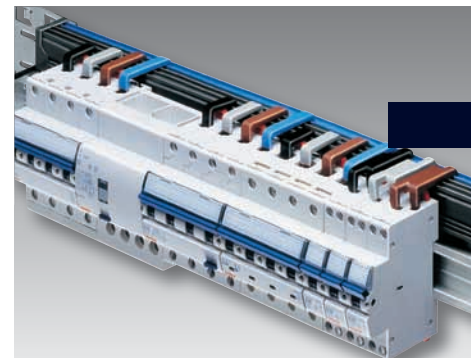
## 47 CVX 160E

Monobloc wall-mounting boards up to 160A, with extractable frame and IP30-40-55-65 degree of protection. Thanks to the extractable frame and quick connection of brackets, rails and functional profiles, very quick assembly is possible.



## 47 CVX 160I

Flush-mounting boards up to 160A, with extractable frame and IP30-40 degree of protection. The particularly refined design and limited dimensions make the CVX 160I boards suitable for advanced commercial environments.



## 47 BUSBAR

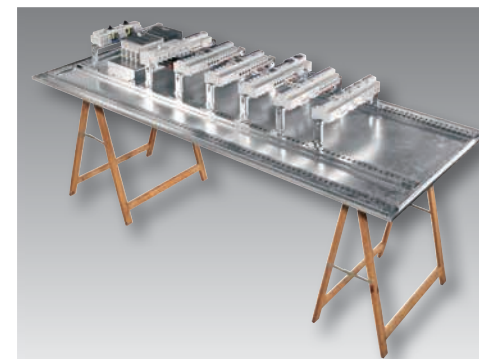
Quick dividers for modular and moulded-case circuit-breakers up to 100, 250 and 400. Distribution systems up to 3200A with shaped and flat busbars.

# DISTRIBUTION BOARDS AND ENCLOSURES



## 47 CVX 630 K

Modular wall-mounting and floor-mounting boards up to 630A, with IP40-43 degree of protection. Thanks to the “completely open structure”, board wiring operations are quick and easy.



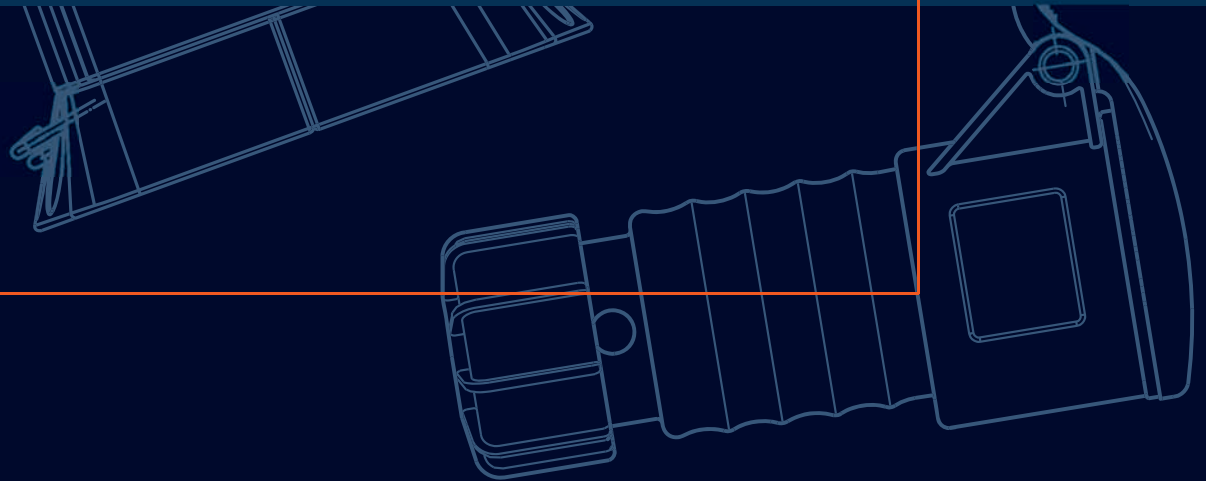
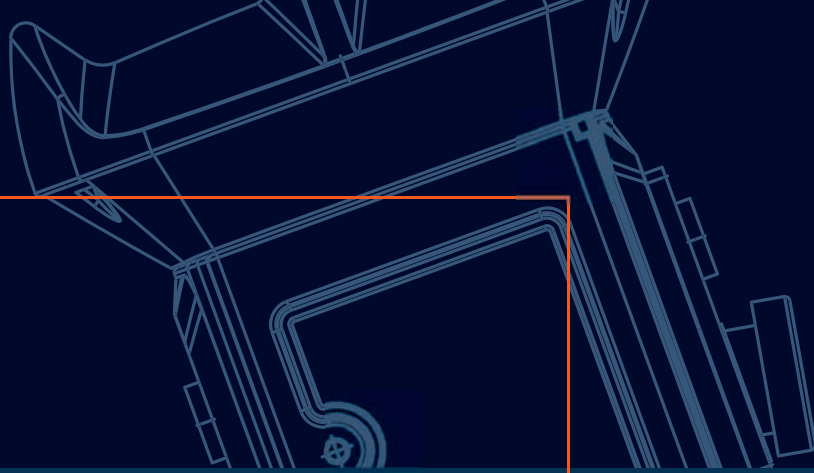
## 47 CVX 630M

Monobloc wall-mounting and floor-mounting boards up to 630A, with IP55 degree of protection. CVX 630M uses the same installation kits as the modular and moulded-case devices and accessories of the CVX 630K modular boards.



## 47 CVX 1600

Modular cabinet for protection systems up to 3200A, with IP31-41-65 degree of protection. Starting from a preconfigured structure, it is possible to create any type of cabinet.





# Energy Bloc

# SOCKET-OUTLETS AND PLUGS TO IEC 309 STANDARDS

## 61/63 SL and 60/61/62/63 IEC 309

The range consists of industrial plugs and socket-outlets from 16 to 125A in mobile or fixed, surface- or flush-mounting, straight or 90°, IP44 or IP67 versions. There are also 16A versions for quick wiring and assembly.



## 64 IEC 309

Multipliers and adapters with different amperage and pole combinations: the versions with two or three outputs offer different energy take-off solutions in the event of a temporary need for several take-off points.



## 44 IB

Horizontal interlocked switched socket-outlets with IP44 degree of protection for energy supply in the commercial and tertiary.



# SOCKET-OUTLETS AND PLUGS TO IEC 309 STANDARDS



## 67 IB

The vertical interlocked switched socket-outlets are made of high performance blue thermoplastic to guarantee high resistance to external agents over time, and IP67 degree of protection. They revolutionise the protection system with the integration of 16/32A miniature circuit breaker and the new 16/63A fuse-holder system.



## 66 IB

The materials used and the IP66 degree of protection together ensure an optimum performance in heavy duty contexts. The versions with and without fuses, or with a 6-module DIN rail, can be installed on surfaces or modular bases.



## COMBIBLOC

The COMBIBLOC compact socket-outlets, with range from 16 to 32A (IP44 and IP55), are the ideal solution for applications in small environments, especially in the commercial sector.

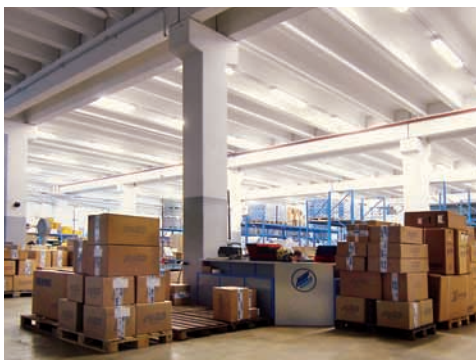




# 68 Q-DIN DISTRIBUTION BOARDS

## 68 Q-DIN

The new system of industrial boards for energy and command distribution contains 46 versions (from 5 to 20 EN 50022 modules), both empty and wired in conformity to the standard EN60439, with an IP65 protection degree.



## 68 Q-DIN ASD

The 68 Q-DIN range of wired boards contains 4 different modular structures to meet every need, with the possibility to personalise the board with IEC 309 socket-outlets from 16 to 63A.



## 68 Q-DIN

The wide range of accessories (pre-arrangement for emergency button, transportation handle, pole coupling, surface-mounting brackets and mobile support) means the distribution board can be adapted to suit any situation.



# 68 ACS DISTRIBUTION BOARDS

## 68 BOX

Thanks to the new interchangeable panels inside the board, the number of possible configurations is increased, offering up to 12 interlocked switched socket-outlets in a single board and up to 60 DIN modules for electric divisions.



## 68 Q-DIN and 68 Q-MC ACS

The 68 Q-DIN and 68 Q-MC ACS wired boards are designed for end distribution on construction sites. Thanks to the GEWISS pre-established construction system, they can be personalised according to individual requirements.



## 68 QP ACS

The GEWISS range for construction sites is completed with the 68 QP distribution boards from 125 to 250A, equipped with emergency button, transportation handles, surface-mounting brackets and key-operated safety lock.



# ENERGY AND SERVICE DISTRIBUTION TERMINALS

## 68 Q-MC 16-63

The 68 Q-MC terminals are the ideal solution for energy, water and signal distribution in ports, campsites, urban areas and industrial sites. Their elegant style and attention to safety standards make them a high quality product.



## 68 Q-MC 63X

The steel terminals bring together excellent design and top technological performance. Their insulating coating eliminates the danger of electric shock and the need for earthing tests.



## 68 Q-MC 125-200

The high capacity terminals allow energy supply with industrial socket-outlets or terminal block output up to 400A. Equipped with retractable doors for protection against the risk of jolts, a key-operated lock can also be applied.



# CONNECTORS AND ROTARY SWITCHES



## GWConnect

The GW Connect range contains 2000 articles subdivided into multipolar connectors, metal accessories and boxes, guaranteeing a complete solution for all disconnectable power and signalling connections in industrial environments.



## 70 RT

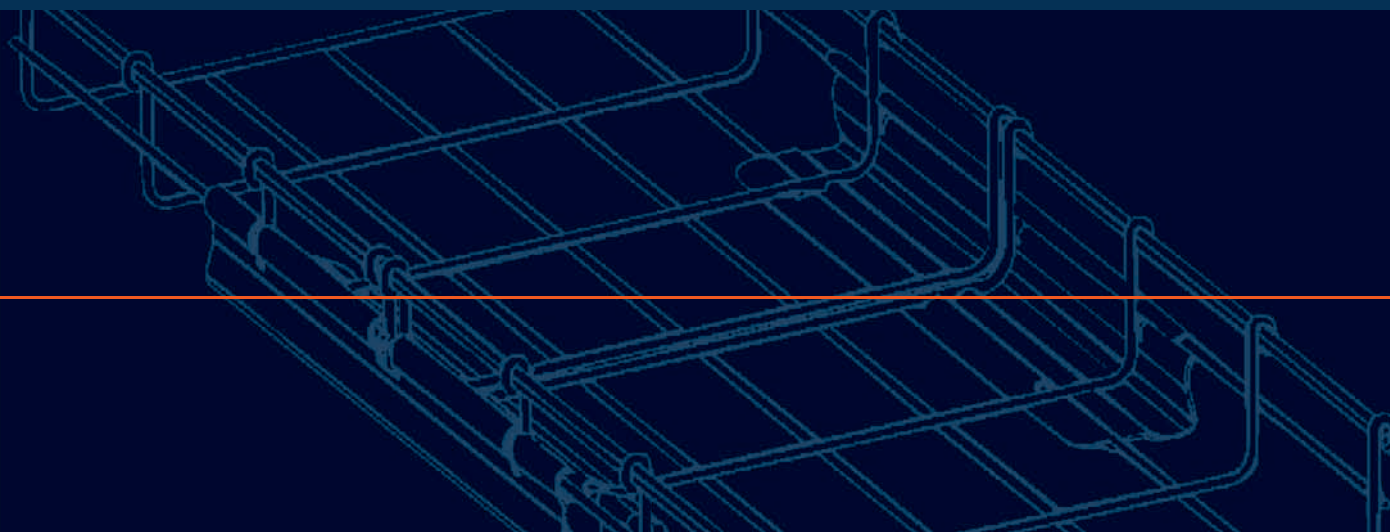
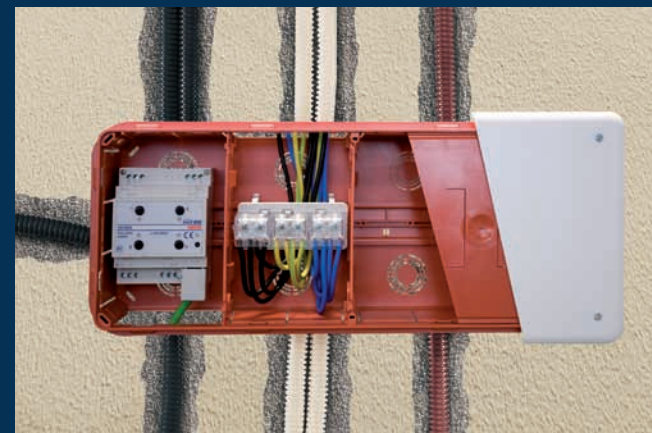
Rotary switches for control and emergency versions, in plastic and aluminium painted boxes with range from 16 to 160A.



## ATEX

Line of products for potentially explosive environments, consisting of interlocked switched socket-outlets, industrial plugs, switch disconnectors, junction boxes, cable glands, watertight luminaires and discharge floodlights.







# Energy Box

# BOARDS FOR AUTOMATION AND DISTRIBUTION

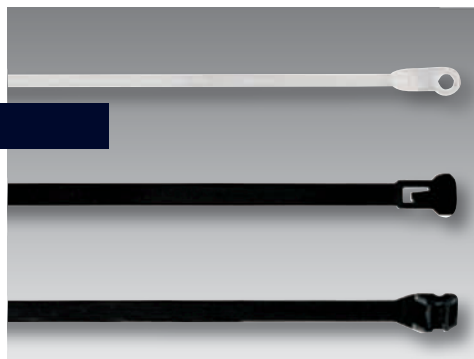
## 46

The watertight surface-mounting boards for automation and distribution are available in 4 types of material: technopolymer (44 CEP), polyester (46 QP), painted metal (46 QM) and stainless steel (46 QX). All the QP, QM and QX boards are resistant and, thanks to the Fast&Easy accessories, quick and easy to assemble.



## 52 FS

Professional range of ties for application in boards, enclosures and junction boxes. There are 6 different product lines: from the PA 66 versions for wiring, to the L.T.R. PA 12 versions for outdoors.



## 74 PS

System of push-buttons, selectors and indicators with 22mm diameter. The 74 PS range allows you to control the status of operations and equipment, guaranteeing high safety standards.



# SURFACE-MOUNTING DISTRIBUTION BOARDS AND ENCLOSURES



## 40 CDK

This range of modular enclosures and boards is available in versions from 2 to 72 modules. With their ample internal space, the 40 CDK enclosures guarantee a high degree of protection (IP65) and impact resistance; they are characterised by the unhookable transparent door that opens to over 180° and they can be combined with a cylinder safety lock.



## 40 CD and 40 CDe

The 40 CD range includes enclosures and distribution boards (watertight, decorative, and protected without door) for the domestic, commercial and industrial sectors. 40 CDe is a range of enclosures and distribution boards for foreign markets, complying with the specific regulations of each individual country.



## 42 RV

Watertight enclosures for emergency operations, available in 5 versions and 2 colours (Red RAL 3000 and Grey RAL 7035); they can be equipped with safety and alarm devices. The IP55 degree of protection means they can be used in all sectors.





# FLUSH-MOUNTING DISTRIBUTION BOARDS AND ENCLOSURES

## Decorative 40 CDi

The new decorative enclosures stand out for their modern, linear, refined design co-ordinated with the shapes and colours of the CHORUS domestic range, offering excellent design integration in both the residential and service industry. Available in versions from 4 to 36 modules, and in 4 different colours to meet the most demanding design needs.



## 40 CDKi and 40 CDi

The 40 CDKi modular enclosures and boards are available in 10 sizes, from 2 to 72 modules, with a blank or smoked transparent door. The 40 CDi range is completed with the CHORUS enclosures and the enclosures protected with a blank door.



## 40 CDi and 48 PTC

Apart from the enclosures for plasterboard walls, with metal door and frame and base with a self-extinguishing level of GWT 850°C, GEWISS also offers watertight modular enclosures of the 48 PTC range with an IP55 degree of protection, for installation in technical rooms.



# SURFACE-MOUNTING JUNCTION BOXES

## 44 CE

Watertight boxes ideal for ordinary junctions, special and industrial uses, made of 3 different technopolymers (2 of which are halogen-free) and with 2 self-extinguishing levels (GWT 650°C and 960°C - UL94:V0). The range includes 11 sizes with 3 degrees of protection (up to IP56), with smooth walls or cable glands and blank or transparent lids with conventional or ¼ turn screws.



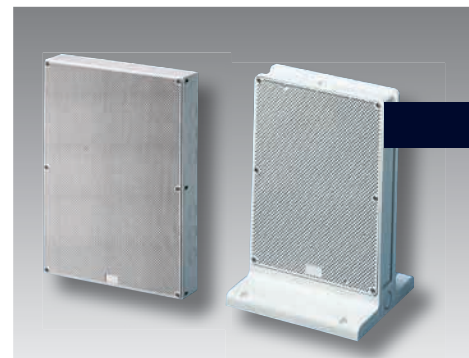
## GW Connect

The die-cast aluminium boxes are suitable for energy distribution in all industrial environments and in special environments too (ATEX versions). They can be combined with back-mounting plates in galvanized steel.



## 42 TV

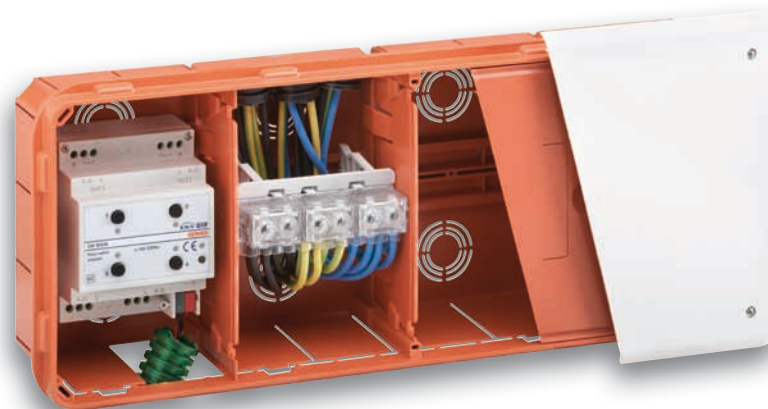
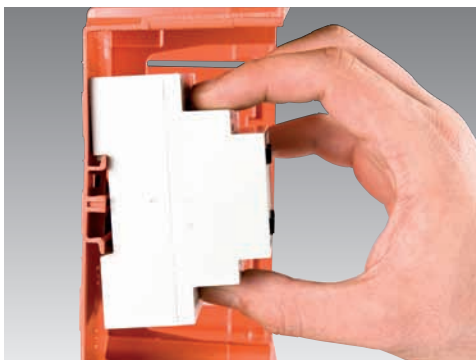
Support bases for electronic equipment, interlocked switched socket-outlets, indicators and push-buttons. Ideal for the remote control of automatism and for energy distribution in the industrial environment with the watertight floor-standing distribution pillar.



# FLUSH-MOUNTING JUNCTION AND MODULAR RANGE BOXES

## 48 PT DIN

The flush-mounting junction boxes for domotics are distinguished by their DIN rail created directly in the press. They also have a protective technopolymer shield with three functions: mortar-guard, paint-guard and additional electro-acoustic insulation.



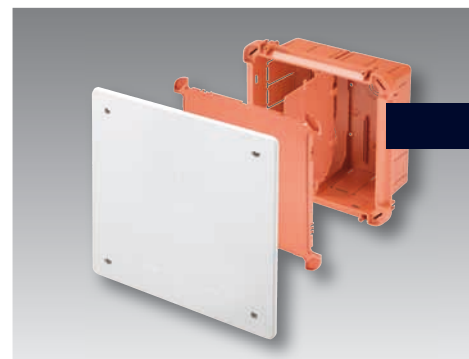
## 44

The terminal blocks for junction and connection are applied to boards, enclosures and boxes. The range has 9 types of product, including the new unipolar equipotential combined terminal blocks of the 44 ME (4-6- and 8-way) range.



## 48 CM

High capacity, deep junction and connection boxes, ideal for shunt along the system uprights. The boxes have a protective technopolymer shield that acts as a mortar-guard, paint-guard and electro-acoustic insulation.

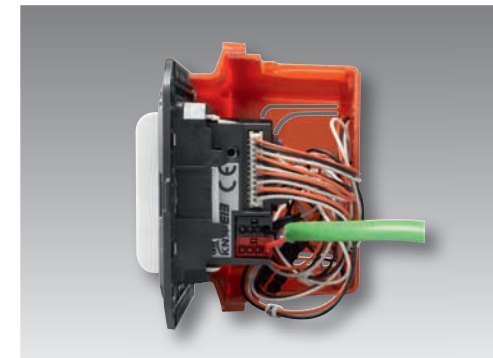


# FLUSH-MOUNTING JUNCTION AND MODULAR RANGE BOXES



## BIG BOX

Flush-mounting boxes for domestic ranges, available in 7 versions (from 3 to 18 gangs) and distinguished by their high mechanical crush resistance and offering the best internal space on the market (+20%). The 3, 4 and 6 gang boxes can also be combined with special, reusable mortar-guard and paint-guard shields in technopolymer.



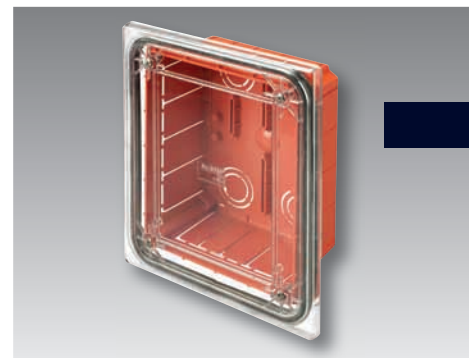
## 48 PT

Flush-mounting boxes available in 11 sizes; recommended for ordinary junction and connection. Equipped with paintable lids, they are pre-arranged side by side installation and for use with the cardboard mortar-guard.



## 48 PTC

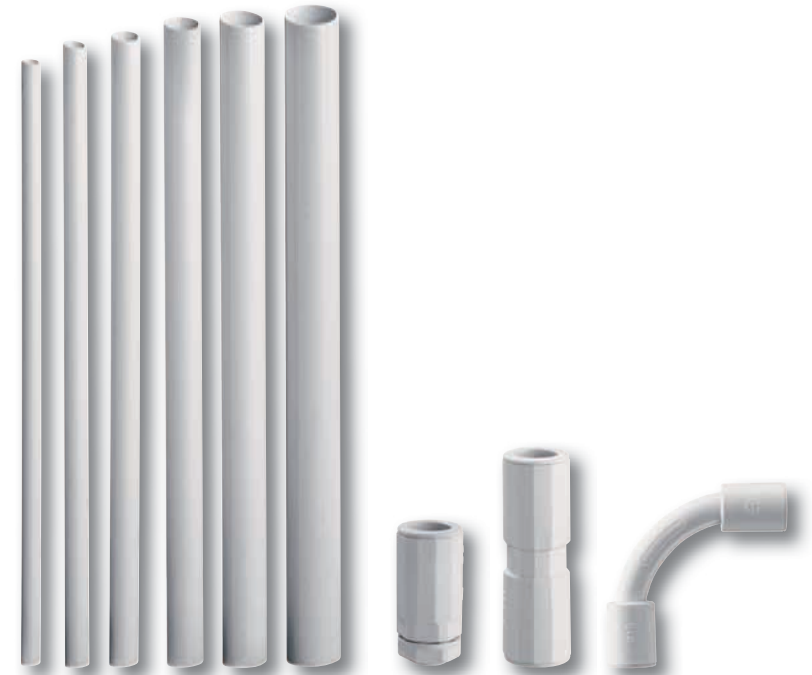
Flush-mounting system with IP55 degree of protection, including junction boxes, enclosures and boards for control and distribution. Ideal for special applications in technical rooms and damp environments. Cardboard mortar-guard supplied.



# RIGID CONDUITS AND ACCESSORIES FOR SYSTEM ASSEMBLY

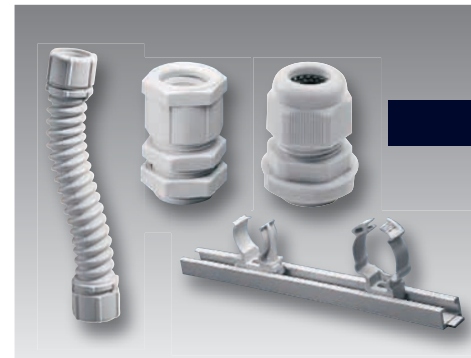
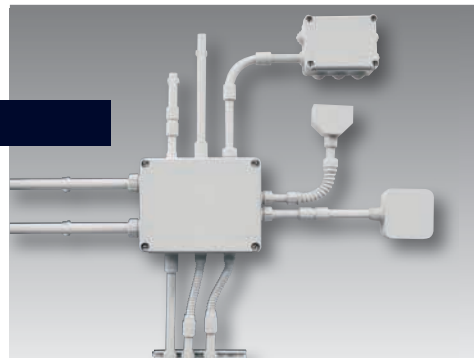
## RK

The system of rigid protective conduits, made of extremely high quality material, guarantees excellent performance levels. Available with diameters from 16 to 63mm, in versions RK15 (medium), IRL/B (medium sleeved), RKB (heavy) and RKHF (heavy in halogen-free material), they are fully integrable with the systems of flexible conduits and junction boxes.



## RK

A wide range of couplings (with IP40 and IP67 degrees of protection) for creating complex exposed systems. The RKHF conduits allow to create entirely halogen-free systems.



## 50 / 52

The robustness and quality of the materials of the cable glands, in metric and PG versions, mean the IP rating is maintained over time. The fixing accessories allow rigid conduits and cables of every size to be fixed to surfaces.



## FK

Available in seven different diameters from 16 to 63mm, in PVC and polypropylene versions, with and without cable puller. The two versions are complementary and allow to satisfy all installation requirements, from simple chased systems to cellular concrete and vibrated reinforced concrete.



## FK

The FK15 medium pliable conduits (classification 3321) are available in 6 colours to identify the different lines. The right solution for the current electrical systems, especially for modern domotic systems.



## FK

The polypropylene pipes, available in ICTA medium version (class. 3422) and FKHF light version (class. 2322) are made of halogen-free material in 4 different colours: the ideal solution for use in reinforced concrete and self-levelling liquid concrete.



# FLEXIBLE SHEATHS, CABLE DUCTS AND ELECTRICAL WELLS

## DF

Thanks to their excellent flexibility and resistance to oils, the sheaths of the DF range (in 14 diameters, from 8 to 60mm, and three colours), and the choice of couplings for connecting boards, junction boxes and rigid conduits, make up a system that's ideal for creating exposed systems.



## FU and PZ: cable ducts

The conformation of the FU cable ducts, in 10 diameters from 40 to 200mm with built-in cable puller and joint supplied, allows the creation of very tight curvature radii and the laying in holes that are not perfectly aligned.



## FU and PZ: electrical wells

Available in 5 sizes with high resistance and gridded lids, they are ideal for cut-outs, as cross-pieces in electrical systems, or for telecommunications. They have knockouts bases for overlapping.



# PLASTIC AND METAL SYSTEM OF TRUNKING



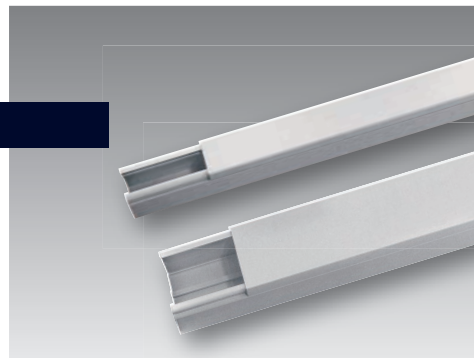
## NP40 and NP42

A system of mini trunking and a system of skirting and frame trunking, corner trunking and overfloor trunking. Two product ranges, fully integrable and designed to offer an alternative to the chased electrical system. They are especially suitable for renovations as they do not require masonry work.



## NP 44/52

System PVC and metal trunking for energy and signal lines. It consists of NF and HS duct trunking for main and backbone distribution circuits, and FB and BR-PVC duct trunking and system device trunking for energy and signal distribution.



## NP 54/55

System of duct trunking and system device trunking in anodised aluminium, consisting of trunking, mini-columns and columns for ceilings and false ceilings, to create energy and signal take-off points in a quick and simple manner.





# STEEL WIRE CABLE TRAYS

## BFR

Innovative system of steel wire cable trays. The possibility to obtain all the route components from the straight elements, the special clip brackets, and the automatic joint - these are all factors that ensure faster, easier installation. Automatic Speedy Curve allows the cable tray to be cut more quickly, and flat curves to be created without cuts and joints, resulting in a better design and improved mechanical resistance.



## BFR

Available with heights of 30, 60 and 110mm, and in 8 widths (from 50 to 600mm), with galvanised steel, electro-galvanised or stainless steel finish. The variety of cuts and surface treatments satisfies all needs in terms of capacity and environmental conditions.



## BFR

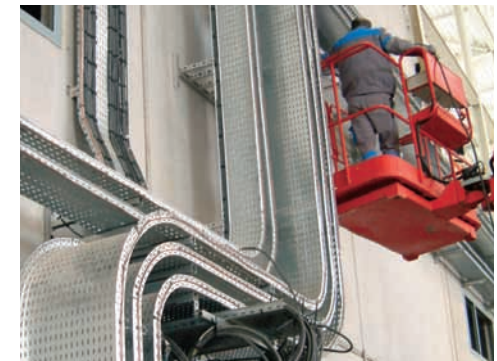
The double wire on the side ensures higher mechanical resistance to loads, and easy cutting. Transversal bending of the mesh offers maximum safety for cables and operator alike during installation.



# SHEET METAL CABLE TRAYS AND SUPPORTS

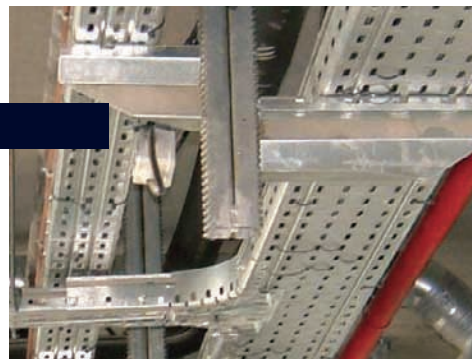
## BRN

A system of perforated cable trays in galvanised steel. Ideal for applications in the commercial and industrial sectors, it is characterised by the rib on the base to provide greater resistance to loads, and the rounded upper edge to ensure the safety of both the cables and the operators. Assembly is quick and easy.



## BRN

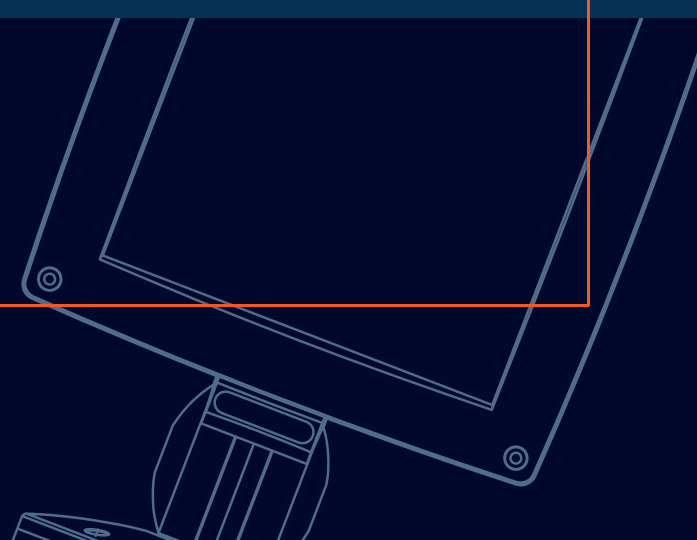
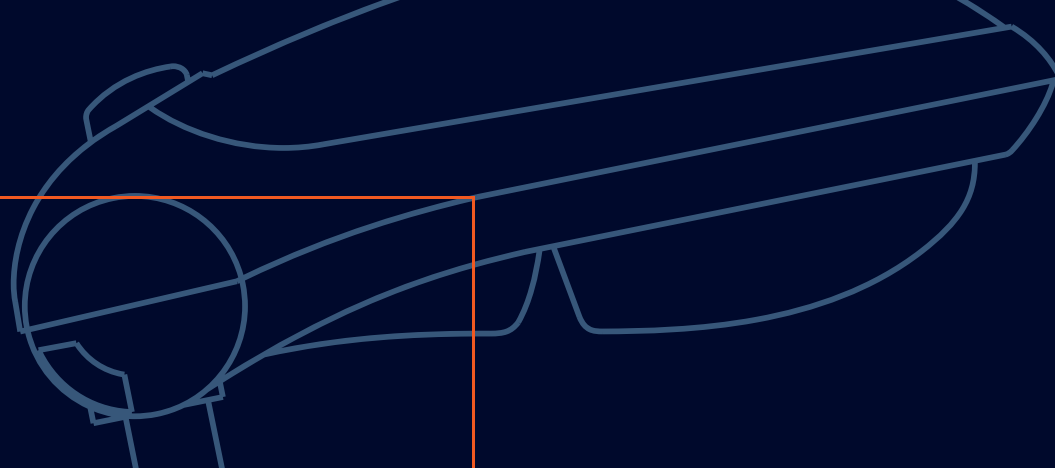
The BRN cable tray is available in Sendzimir and HDG finishing, in 4 heights (35, 50, 65 and 80mm) and 12 widths (from 95 to 605mm). A range of 33 sizes to meet the needs of every type of installation, from small systems to heavy industry.



## SP

The SP range contains three types of support: for light, medium and heavy loads. They enable all the GEWISS cable trays to be fixed on both surfaces and ceilings.







# Lighting

# FLOODLIGHTS - LOW/MEDIUM POWER

## MERCURIO

A range of die-cast aluminium floodlights of low and medium power (70 - 400W), available in two sizes. Its compact, technical design means it can be used for both floodlighting purposes and in the urban context. Great attention to detail, shown by the perfect integration of the handle and hinge with the shell of the product.



## HORUS

A range of floodlights for indoors and outdoors, made of reinforced, mass-coloured polyamide. The thermoplastic shell reduces the overall weight, making installation easier. The HORUS range lets you choose from a wide variety of lamp types.



## URANO

A range of floodlights for outdoors and indoors, made of die-cast aluminium with an asymmetrical optic. Available in three different finishes: graphite grey, aluminium, and white, to offer great versatility of use and easier integration in any environment.



# FLOODLIGHTS - MEDIUM/HIGH POWER



## STADIUM

Outdoor floodlights for lighting very large areas. Lamps with a maximum power of 2000W, combined with symmetrical or asymmetrical, diffused or restricted optics. The versions with asymmetrical optic guarantee excellent light emission, that can illuminate even at large distances.



## TITANO

High quality and high performance floodlights for power levels from 150 - 1000W. Suitable for lighting outdoor areas of an average size, with a high level of uniformity.



## COLOSSEUM

Range of die-cast aluminium floodlights for discharge lamps with a maximum power of 2000W. A product line enriched with a vast range of optics: symmetrical, asymmetrical and circular, with diffused and restricted beams.



# STREET LIGHTING - SIMPLIFIED MAINTENANCE

## AVENUE

Street lighting with simplified maintenance, designed to meet current regulations on this matter. Available in die-cast aluminium or technopolymer. The AVENUE range and the wide selection of light sources will satisfy the needs of every user, guaranteeing notable energy savings plus a reduction in management and maintenance costs.



## AVENUE

Avenue has a single opening, with a 1/4 turn lever handle. Inside there's a case containing all the electrical components - including the lamp - which can be replaced in one, easy manoeuvre.



## AVENUE 3

The AVENUE range is completed with the new version, AVENUE 3, the smallest of the family; it's in die-cast aluminium for discharge power levels up to 150W.

# STREET LIGHTING - STREET LIGHTING DEVICES



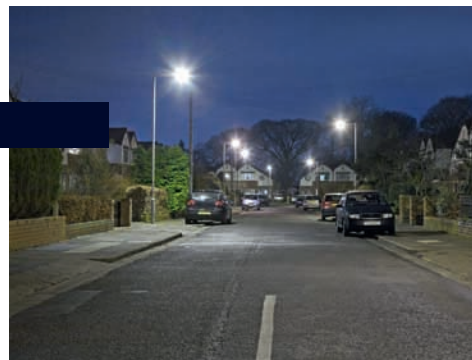
## INDY

Family of street lighting devices with high lighting performance using cut-off and semi cut-off optics, suitable for use in urban and extra-urban streets, access drives and car parks.



## INDY

The **INDY** range complements the conventional models with discharge lamps, adding versions designed to reduce energy consumption during the night-time, optimising the flow distribution and safeguarding energy consumption levels.



## CITY

Low power street lighting for secondary streets, car parks and the outer perimeters of industrial buildings. All the street lighting devices have double insulation as to ensure greater electrical protection.

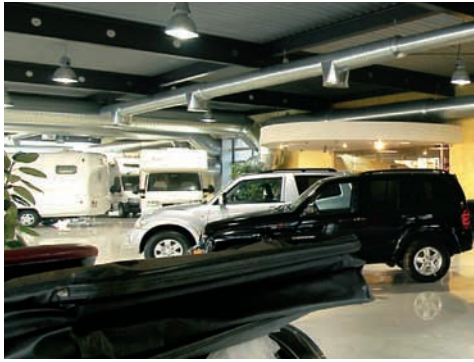




# INDUSTRIAL - HIGH BAYS

## HALLE

Watertight die-cast aluminium high bay available with two different colours (graphite grey and aluminium) for the electrical component compartment, and with 5 optics in aluminium or Plexiglas with high module. A perfect blend of design and lighting performance, HALLE is ideal for installation in both the industrial and commercial sectors.



## KONO

Watertight industrial high bay, characterised by the wide possibilities for lamp focus adjustment (8 different positions) to obtain the best light emission in every environment and at any installation height.



## HERCULES

Industrial suspension high bay in pressed, painted steel, available with two different colours (graphite grey and grey RAL 7035) for the wiring compartment, and with 3 types of optic (smooth, scored and transparent).



# INDUSTRIAL - HIGH BAYS AND LUMINAIRES



## ZNT

Watertight luminaires in high quality polycarbonate. The robustness and quality of the materials, combined with the various fixing possibilities, make this product ideal for installation in the industrial and commercial sectors, or in sports facilities.



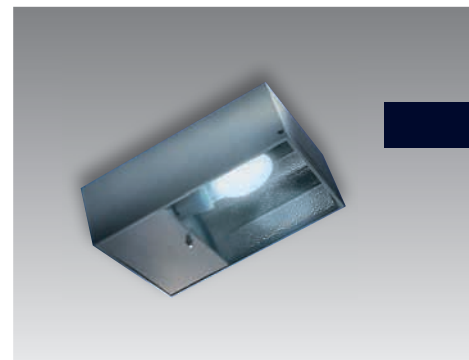
## ZNT

The ZNT range is completed with electronic versions for compact fluorescent lamps of 55W and 80W, allowing the luminaires to even be installed at a height of more than 5m thanks to the use of special restricted beam high bays.



## FRIBAY

Compact ceiling-mounting high bay for discharge lamps with a maximum power of 400W. Double degree of protection: IP21 for the optical compartment (which can be increased to IP41 if installed with the protective glass) and IP41 for the electrical component compartment.



# URBAN FURNISHINGS - SYSTEMS AND FLOODLIGHTS

## SATURNO SYSTEM

Multifunctional system for urban lighting, with direct or indirect light thanks to the use of the special reflective canopy. The wide range of sources and optics means it is possible to use devices with the same external design, but with different photometrical performance levels depending on the specific application.



## DEDALO

Compact, low power floodlight for architectural lighting. The wide range of light sources - from discharge lamps to LEDs - satisfy all the design requirements of modern lighting engineering.



## SATURNO

Die-cast aluminium floodlight with an innovative design. Especially suitable for environments of high architectural merit. The numerous optics available, and the various light sources, meet every need whilst also ensuring excellent energy savings.



# URBAN FURNISHINGS - POLE COMPOSITIONS



## PLACE

A lighting system using poles or walls, for public and private areas. The special GEWISS-patented poles have 6 vertical guides for housing the globes with shielded optic. With the aid of special blocks, various accessories can also be installed (telecameras, indicator signs, baskets, etc.).



## MERCURIO SYSTEM

An urban lighting system offering great lighting flexibility thanks to the wide range of optics and sources. The modern lines and simple, minimal shapes blend perfectly with any urban context or environment.



## GLOB

Globes for lighting public and residential parks and gardens. This system is designed to be freely composed according to the specific needs. It is possible to use 7 globes simultaneously.



# RESIDENTIAL/COMMERCIAL - SMALL RESIDENTIAL POLES

## BILIGHT AND TRILIGHT

Decorative lighting devices for residential applications, with a rectangular or triangular section. The range makes full use of LED technology to create two levels of light intensity - a main one and a secondary one for signalling. BILIGHT and TRILIGHT are especially suitable for lighting walkways and paths, and for marking off defined areas.



## POINT

The lighting devices with shielded optic for outdoor residential areas are available with compact fluorescent lamps and low loss magnetic power supplies. The design of POINT blends perfectly with any installation context.



## GLOB

The devices for lighting private and residential green areas are suitable for both incandescent and fluorescent lamps with E27 coupling. The globes are available in several colours, offering a different light effects to suit every context.



# RESIDENTIAL/COMMERCIAL - WALL/GROUND RECESSED



## METROLIGHT

The LED lighting system with Wallwasher optic is made up of patented modules that distribute the light in a continuous manner over various routes. The use of the innovative 230V LED source (without the need for power supplies) means there are no longer any limits to the designer's creativity in terms of length and form, or for the number of sources that can be powered.



## LUXOR

Devices for floor flush-mounting in die-cast aluminium, ideal for combining lighting and mechanical performance. Also available with closure ring or flange in stainless steel.



## LUXOR WALL

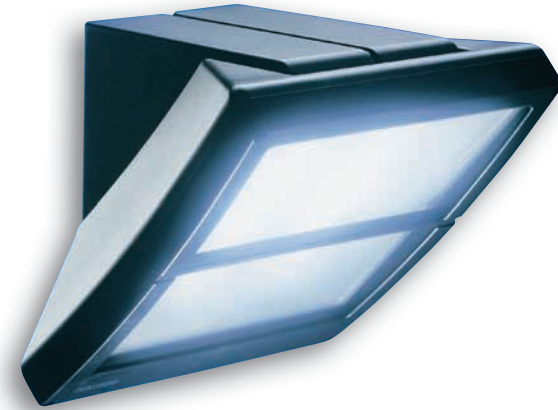
Devices for surface flush-mounting in die-cast aluminium for fluorescent, LED and discharge sources with symmetrical or asymmetrical optic. The flange maintains the family feeling with the CHORUS range, offering design coherency throughout the rooms.



# RESIDENTIAL/COMMERCIAL - LUMINAIRES

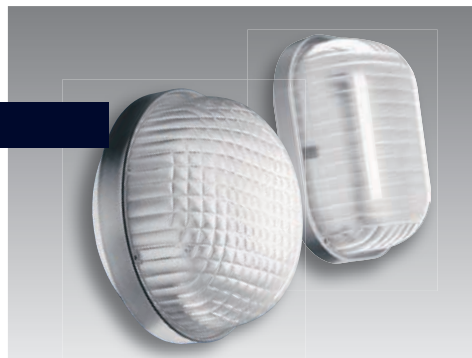
## EXTRO

The multifunctional devices for lighting residential and urban areas can be installed on walls, corners, round poles, or special columns with a watertight plate.



## BOLLA AND GUSCIO

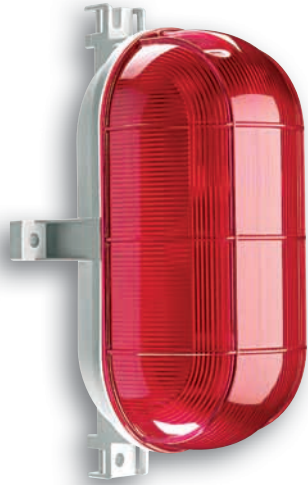
Made of high quality thermoplastic, the luminaires are characterised by their excellent mechanical resistance. Versions for fluorescent lamps with electronic power supply, and with a light-sensitive sensor for energy savings.



## TONDA

Device with diffused lighting, for incandescent and fluorescent light sources. Versatile and suitable for wall/ceiling installation, TONDA is also designed for systems buried in concrete, or external ones.





## TARTA

Light signalling devices made of highly resistant thermoplastic material. All the versions have double insulation to guarantee even greater protection against accidental electric contact. Available in white, green, yellow and red.



## RETTA

Light signalling devices in a highly resistant thermoplastic material, available with red, green, yellow or white shield. Suitable for operation with incandescent or fluorescent lamps with E27 or T5 coupling.



## HOBBY

The HOBBY portable lighting devices are made of highly resistant thermoplastic. The power supply cable (supplied as standard) enters at the base of the grip.





# INDOOR COMMERCIAL AREA - LUMINAIRES/FLUSH-MOUNTING ELEMENTS

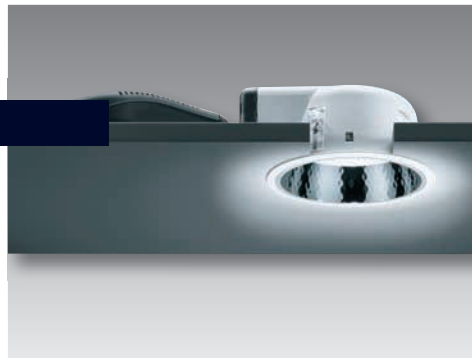
## MANTA AND IRIDE

The MANTA devices, available in three sizes, are easily inserted in every type of environment and furnishings. The diffuser in opal Plexiglas with satin finish gives the product a higher design quality and produces a softer light. Its rounded profile and compactness provide it with a simple, elegant style.



## ASTRID 210

Professional system of flush-mounting downlighters with compact fluorescent sources. ASTRID 210 uses only high quality materials and is also available in the IP44 version for better glare control.



## ASTRID 75

ASTRID 75 is the best alternative to conventional dichroic lamps. Available in the glossy white version, or with a metallised aluminium, gold or bronze effect, the finishing ring is adjustable and in die-cast aluminium.



# INDOOR COMMERCIAL AREA - DEVICES FOR WALLS AND RAILS



## DEDALO RAIL

Floodlights in die-cast aluminium, for assembly on rails. Designed for use in exhibition and commercial contexts (showrooms, shops, shop windows, museums). The device is suitable for assembly on common three-phase rails and can be adjusted to any position, ensuring 100% versatility.



## DOMUS

Devices for walls and rails, providing indirect light with halogen lamps; clean, simple design, conceived to obtain the maximum light with an elegant style but the minimum visual impact.



## GPF

Devices for indirect lighting, suitable for installation in any type of context. GPF is available in two versions: the wall light for surface-mounting, and the upright, with its elegant stem to stand directly on the floor.



# EMERGENCY - CENTRALISED MANAGEMENT

## STARTEC EIB

Emergency devices for centralised management that can be integrated in building automation systems. The luminaires communicate via BUS, following the KNX standard communication protocol. The dual microprocessor electronics manage all operation statuses, and the execution of the operational and battery tests.



## STARTEC NET

Autonomous emergency luminaires for centralised management via BUS LonTalk. Thanks to the unequivocal identification code that is automatically transmitted, the luminaires are recognised and autonomously registered by the control unit.



## UPS

The UPS rescue units can be integrated with the Startec GSE or with traditional fluorescent luminaire in Startec Net system. They are available in the versions 1.5 - 4.5 kW single phase and single phase with double conversion On Line technology.

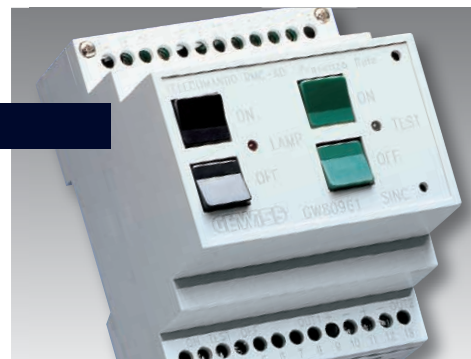
## STARTEC BASIC

Conventional autonomous emergency luminaires with symmetrical optic. The range includes fluorescent luminaires in the wall/ceiling, flush-mounting, double sided and watertight IP65 versions. There are also emergency signalling luminaires that use LED technology. Shell and diffuser made entirely of thermoplastic with a self-extinguishing level of 850°C.



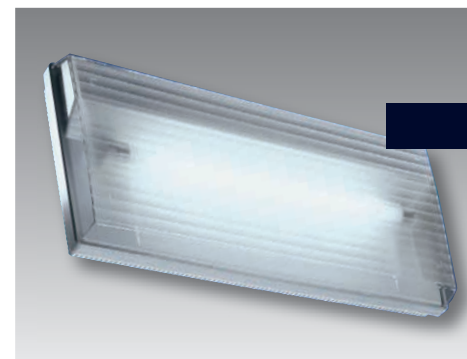
## STARTEC CHECK

Autonomous emergency luminaires with local self-diagnosis. STARTEC CHECK performs regular lamp and battery operation tests; the signalling LED indicates the outcome of the test and the operation status of the lamp.



## STARTEC FLAT

Conventional autonomous emergency luminaires with asymmetrical optic. Shell and diffuser made of thermoplastic. Lamp connection is simplified with the fixing plate, to optimise installation times.



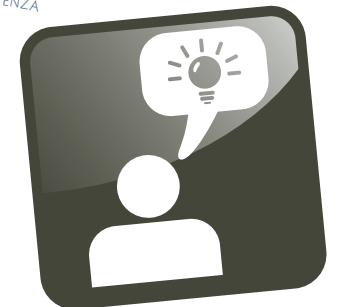
## GEWISS PROFESSIONAL

Created from the technological evolution in GEWISS, the GEWISS Professional skills centre spreads an electro-technical culture via:

- **TRAINING** - a range of courses to aid the professional and technical growth of the electro-technical experts.
- **TEACHING** - courses, manuals and equipment for technical school teachers.
- **INNOVATION** - a centre for spreading topics of social interest and as a point of exchange for people involved in plant engineering.
- **SKILLS** - teaching instruments and technical manuals for all those who want to develop their knowledge and learn about training activities.

The aim of GEWISS Professional is to help professionals increase their own, highly personal, unique and incomparable skills background via a path that leads them to fulfil their own professional potential. Installers and electrical designers, architects and professionals of the construction sector are the main target of the GEWISS Professional initiatives. But that's not all. The tools provided by GEWISS Professional will be a firm support for technical schools, universities, and production/entrepreneurial set-ups as well.

For further information about the initiatives of GEWISS Professional, go to [www.gewissprofessional.com](http://www.gewissprofessional.com).





## GEWISS TRAINING

In recent years, GEWISS has dramatically increased its investments in training activities, by increasingly broadening the selection of activities dedicated to professionals of the electronics sector, in particular installers, designers, architects and building industry representatives. In order to grasp the company's commitment, let's mention the number of activities pertaining to 2009: 800 training events (meetings, seminars, congresses and courses), which more than 50,000 professionals of the electronic sector attended.

Through these activities, GEWISS implements the objective of its "mission", in other words the desire to bring INNOVATION to the market.

Training is strategic to the whole sector, as the electrical world is evolving and the professionals concerned will increasingly have to possess adequate knowledge of the most modern system technologies. Today it is indispensable to possess cross-sector skills which foster the interaction between the electrical system and all the systems found in a building, by taking advantage of the automation and communication potentials offered by modern technologies.



# WEB SERVICES



## www.gewiss.com

Thanks to the GEWISS electro-technical portal, you can keep up to date with the new ideas in the GEWISS range, follow on-line technical training courses, and consult the interactive catalogue and the technical bulletin. What's more, by accessing the GEWISS on-line services you'll receive prompt technical and commercial assistance at all times.

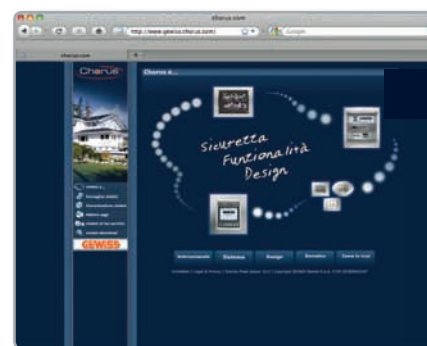
## www.gewiss.tv

The first online TV of the electro-technical world, offering constant updates on all the innovations in this sector. On Gewiss.tv you'll find training videos, information, application references, and interviews with the experts.



## www.gewiss.chorus.com

For all those who want to discover a new way of living the home, based around design, safety and practicality. The web area dedicated to the Chorus international domotic system lets you dress the walls of the home and choose the best solution for every room.



## www.gewissprofessional.com

The site dedicated to the new GEWISS skills centre, promoting a new system culture via training courses, manuals, workshops and teaching kits for all those professionals who want to keep abreast of technological innovation.



## www.spaziochorus.com

By just accessing the site, you can make a virtual tour through SPAZIO CHORUS, the intelligent GEWISS home in the heart of Fieramilano (Rho). Spaziochorus.com is a wonderful interactive experience applied to day-to-day life.





Software for the control and management of Gewiss programs. It shows all the characteristics of the various software packages by means of descriptions, pictures and video courses, making the choice easier.



Software for the design and cost estimate of electric systems for the residential and commercial sectors. It allows you to obtain the documents to be attached to the Declaration of Conformity.

NEW



Software to configure AS, ACS or ASD-type distribution boards of the pre-established Gewiss building system, and to draw up the technical documentation, cost estimate and plate.



Software for the lighting design of indoor and outdoor environments, and the creation of the documentation to be supplied to the client as a project selection aid.



Software for the design, sizing and cost estimate of LV systems and distribution boards. It also allows you to obtain the design of the front panel, and carry out a thermal check.



Software for the cost estimate of a complete electrical system. It may be used as a stand-alone, or by importing data processed by other Gewiss programs.



Software for the creation of bid specifications for electrical systems related to various application environments that may be selected by the user.



Software for the certification and cost estimate of enclosures and distribution boards in a residential (or similar) environment, in compliance with CEI 23-51.



Software for drawing up the documentation relating to the Declaration of Conformity for the high standard of the system (Ministerial Decree 37/08 - CEI 0-3). It contains all the references to the main quality marks for Gewiss products.



Software for the design and cost estimate of BUS systems.



Software for managing the DXF drawings representing the Gewiss products, and for inserting them in AutoCad or GWCAD.



Program for the automatic update of Gewiss software packages.



# NEW FEATURES OF THE 2010 DOCUMENTATION

DVD DATA CENTER AND SOFTWARE



## 2010 FILE

The new technical-commercial documentation for 2010 is an essential work tool for all those professionals who want to keep abreast of the new electro-technical solutions. The 2010 File includes the Trade Catalogue, Product Album, Lighting Catalogue, DVD Data Center, and "2010 Activity Preview" leaflet.



## DVD DATA CENTER AND SOFTWARE

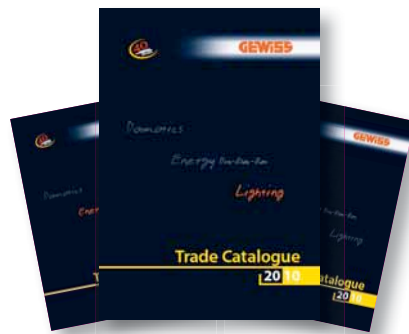
A useful multimedia support for professionals who want to access the information in the GEWISS catalogue from the comfort of their own PCs. The DVD contains:

- **Software 2010** - the complete software suite for the design, budgeting and certification of the GEWISS range;
- **Data Center** - a multimedia catalogue for browsing the 2010 Trade Catalogue, the Product Album and the technical manuals.



## PRODUCT ALBUM

An overview of all the product families. In the Album you can find a description of the main characteristics and application advantages of the GEWISS solutions for home management, protection, energy distribution and lighting.



## TRADE CATALOGUE

Intuitive, immediate and user-friendly, the Trade Catalogue contains all the information you need on the Domotics, EnergyDIN, EnergyBLOC, EnergyBOX and Lighting ranges: apart from the product codes, you can also find the current prices as of 1st January 2010, and the selection tables for each range.



## LIGHTING CATALOGUE

Conceived for the professionals of the world of lighting, the catalogue describes all the GEWISS lighting devices, with selection guides and technical tables to make your consultation and choice that much easier.



DOMOTICS ENERGY LIGHTING

GEWISS S.p.A. Registered Office: Via A. Volta, 1 - 24069 CENATE SOTTO (Bergamo) - Italy  
Tel. +39 035 946 111 - Fax +39 035 945 222 - [gewiss@gewiss.com](mailto:gewiss@gewiss.com) - [www.gewiss.com](http://www.gewiss.com)

Bergamo Registrar of Companies / VAT no. and tax code 00385040167 - REA 107496 - Share capital 60,000,000.00 EUR paid-up