

ALT 4/6

ELECTROMECHANICAL BARRIER WITH DOUBLE BUILT-IN FLASHING LIGHT
FOR BAR FROM 4 TO 6 m, 24 Vdc



PLUS



Double spring (6 m model) to counter balance movement and make it more fluent

Anti-UV rays epoxy power coating

Robust gears and levers for reliable functioning over time

Performance increase: 3,5 sec opening time for 4m barrier and 6 sec for 6 m barrier

Encoder for obstacle detection and immediate run inversion

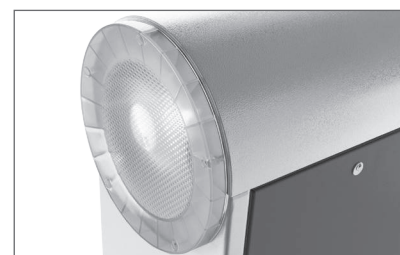
For intensive use, for private and public solutions

Energy saving mode

Universal box: bar can be installed both right or left

Possibility to set different speed in opening and closing motion

With 24 Vdc control unit CT102 24, (pag. 128 for technical details)





Double Led flashing light



Metallic gear + shock resistant motor

MODELS

CODE	DESCRIPTION	PCS PALLET
 ALT424K	Barrier body, 24 Vdc motor, with control unit in box, with encoder, double built-in led flashing light. For 4 m bar (1 pc)	6
 ALT624K	Barrier body, 24 Vdc motor, with control unit in box, with encoder, double built-in led flashing light. For 6 m bar (1 pc)	5

TECHNICAL DATA	ALT424K	ALT624K	
MECHANICAL DATA			
torque	Nm	200	250
working cycle	%	80	80
opening time at 90°	sec	3,5	6/*12
ELECTRICAL DATA			
control board	CT102 24	CT102 24	
power	Vac (Vdc)	230 (24)	230 (24)
motor consumption	A	1,3	1,3
absorbed power	W	300	300
integrated lights	yes	yes	
GENERIC DATA			
protection degree	IP	54	54
dimensions (L - D - H)	mm	360 - 220 - 1110	450 - 280 - 1188
weight	kg	47	67
working temperature	°C	-20 + 55	-20 + 55
maximum bar lenght	m	4	6 *(8 mt)

* with 8 m bar

ACCESSORIES ALT 4K



AS4
Aluminum bar
L=4000 mm
di. 60x30 mm

PC 1



AS-4J
2+2 m aluminum
bar, 60x30x2 with
joint included

PC 1



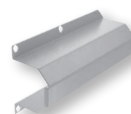
AS-SNO3
Joint for
articulated rods
with 3 m aluminum
bar included. Only
for ALT424K

PC 1



AST4
Aluminum tubular
bar L=4000 mm Ø
60 mm, in case of
strong wind

PC 1



ATAST60X
Connection for
round bar Ø 60
mm

PC 1



CP-BR
Anchorage plate
with rag bolts

PC 1



PROF
Flexible rubber
profile, 8 m and
plug set for AS4

PC 1

ACCESSORIES ALT 6K



AS6
Aluminum bar
L=6000 mm
di. 100 x 40 mm

PC 1



AS-6J
3+3 m aluminum
bar, 100x40x2 with
joint included

PC 1



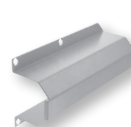
AST6
Aluminum tubular
bar L=6000 mm Ø
90 mm, in case of
strong wind

PC 1



AST8
Round telescopic
aluminum boom
L max=9000 mm
Ø 60/90 mm, with
counter- weight,
joints and fixed
support (not acces.)

PC 1



ATAST90X
Connection for
round bar Ø 90
mm

PC 1



CP-BR6
Anchorage plate
with rag bolts

PC 1



PROF6
Flexible rubber
profile, 12 m and
plug set for AS6

PC 1

ALT 4/6

ACCESSORIES



APF
Fixed support

PC 1



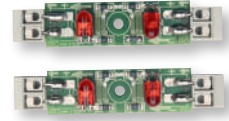
APM
Mobile support

PC 1



CT-LIGHT
Control unit for KLIGHT

PC 1



KLIGHT
Kit lights

PCS 4



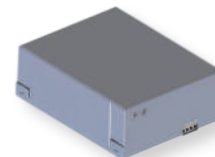
RIMAE
Magnetic sensor, one coil, two outputs
(impulse and presence)

PC 1



SKIRT
Kit aluminum fence,
length 1,7 m

PC 1



KBP
Battery back-up kit

PC1



AD
Red reflecting adhesive
stripes

PCS 10

ALT 4K

Electromechanical irreversible barrier with double built-in flashing light for bar 4 m, 24 Vdc

Anti-UV orange peel power coating.

Robust gears and levers for reliable functioning over time.

Performance increase: 3.5 sec opening time for 4m barrier and 6 sec for 6 m barrier.

Encoder for the obstacle detection and immediate run inversion.

For an intensive use, for private and public solutions.

Energy saving modality in stand by.

Compatible with new 230Vac control unit CT102 24.